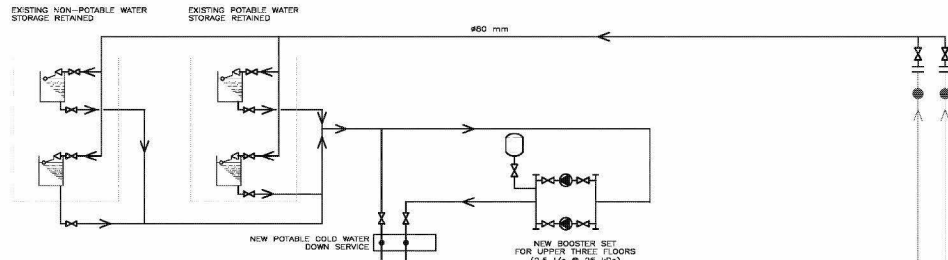
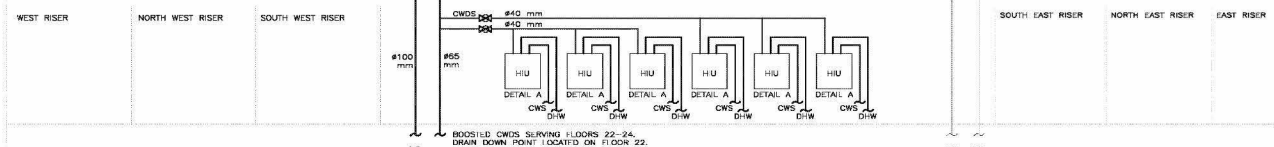


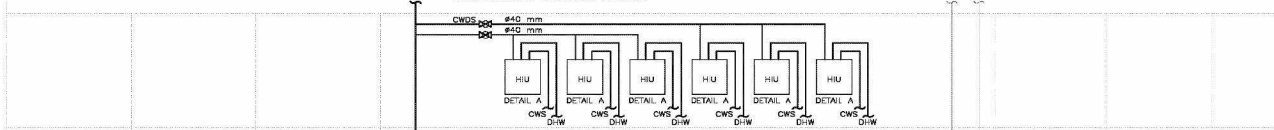
ROOF TOP PLANT ROOM



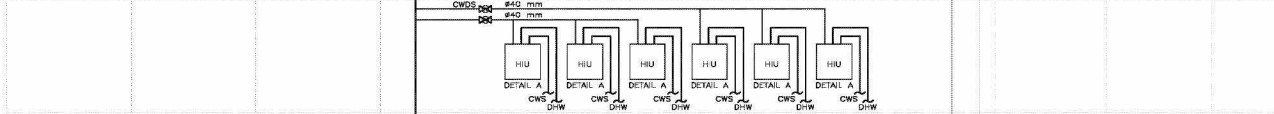
LEVEL 22 TO 24
EXISTING RESIDENTIAL



LEVEL 05 TO 21
EXISTING RESIDENTIAL

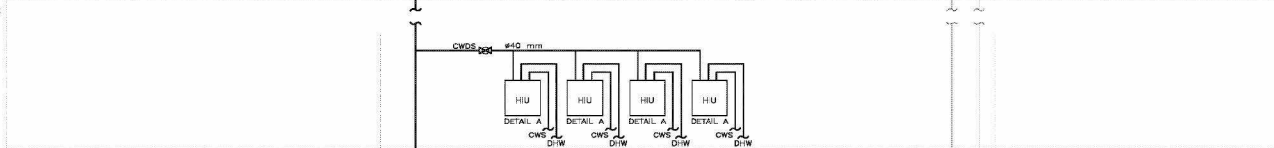


WALKWAY -12 LEVEL 04
FIRST EXISTING RESIDENTIAL

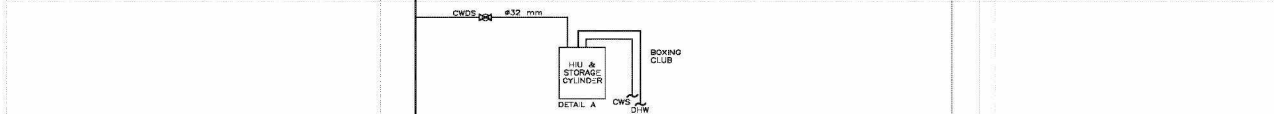


ASSUMED EXISTING PIPE OFFSETS
ARE CAST IN FLOOR SLAB

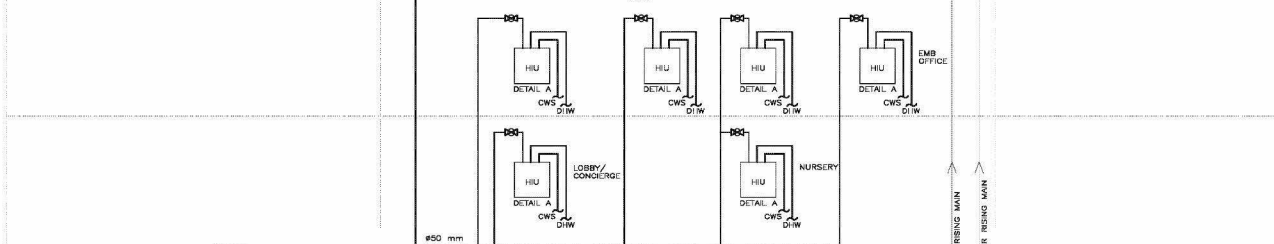
WALKWAY -11 LEVEL 03
NEW RESIDENTIAL



WALKWAY LEVEL 02
BOXING CLUB



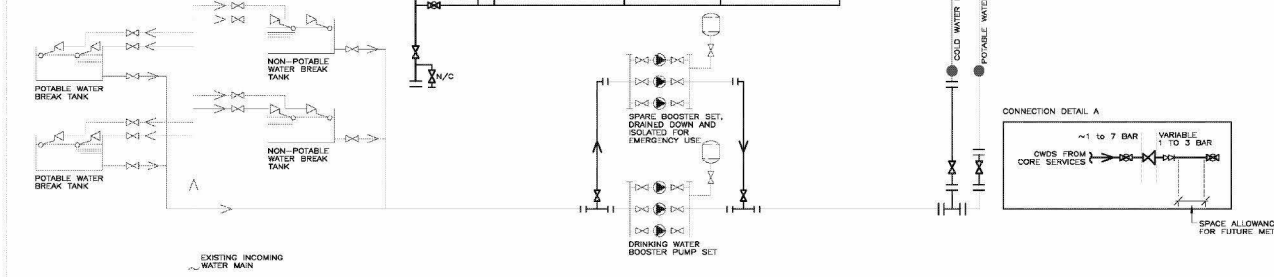
MEZZANINE LEVEL 01
NEW RESIDENTIAL



GROUND LEVEL 00
NURSERY AND MEETING ROOM



BASEMENT PLANT ROOM



- KEY
- NEW WATER SYSTEM
 - RETAINED WATER SYSTEM
 - FLOW DIRECTION ARROW
 - DOMESTIC HOT WATER CALORIFIER
 - PUMP
 - ISOLATION VALVE
 - N/C NORMALLY CLOSED ISOLATION VALVE FOR SYSTEM FLUSHING
 - ISOLATION VALVE FULL BORE QUARTER TURN ISOLATION VALVE
 - DRAIN DOWN POINT
 - EXPANSION VESSEL
 - BMS POINT
 - WATER METER

- NOTES
- DO NOT SCALE FROM THIS DRAWING.
 - THIS DRAWING REFLECTS THE DESIGN GENERALLY IN ACCORDANCE WITH STAGE 1 FOR DESIGN & BUILD, AND AS SUCH REPRESENTS DESIGN DEVELOPMENT AT THIS STAGE AND DOES NOT CONTAIN ALL THE INFORMATION REQUIRED TO FORM A FULL AND FULLY WORKING INSTALLATION WITHOUT FURTHER DESIGN DEVELOPMENT FROM THE CONTRACTOR.
 - READ IN CONJUNCTION WITH RELEVANT SPECIFICATION AND SCHEDULE.
 - WHERE TANKS ARE TO BE RETAINED, ISOLATION VALVES ARE TO BE REFURNISHED AS PART OF THE WORKS.

T1 01/7/13 STAGE 1 TENDER ISSUE
rev. date description
MJS
eng

MAX FORDHAM

Max Fordham LLP
42-43 Gloucester Crescent
London
W1D 7JF
maxfordham.com

Registered in England No. 03200042
Registered Office 12-13 Gloucester Crescent London W1D 7JF

architect
STUDIO E LLP

job title
GRENFELL TOWER
REFURBISHMENT

project leader date issue (of 1)
DC NOV 2013 NTS

drawing title
CORE SERVICES
WATER SERVICES SCHEMATIC
RETAINED & REMOVED

job no. dwg no. rev.
J4614 5(-)01_251/T1