

Above 18m

celotex.co.uk


SAINT-GOBAIN

- Approved Document B (Fire Safety)
- Section 12 (External Wall Construction)
- Insulation Materials & Products

Section 12.7

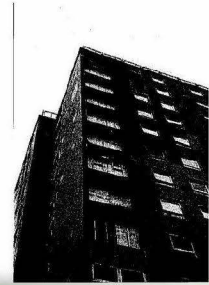
"In a building with a storey 18m or more above ground level, any insulation product, filler material etc. used in the external wall construction should be of limited combustibility"



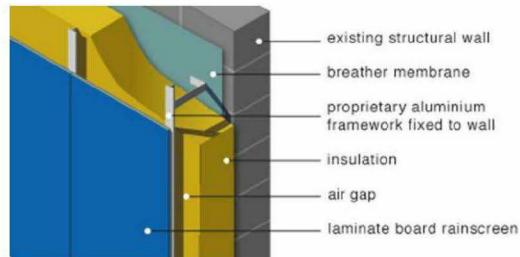
- Section 12.5

"External walls should either meet the guidance given in paragraphs 12.6 to 12.9 or meet the performance criteria given in the BRE Report *Fire performance of external thermal insulation for walls of multi storey buildings* (BR 135) for cladding systems using full scale test data from BS 8414-1: 2002 or BS 8414-2:2005"

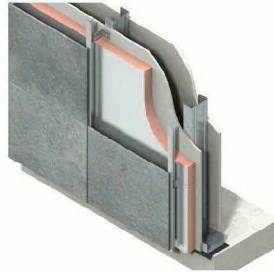
- Developed in 1988
- In Response To Increasing Use Of Thermal Insulation In Refurb Programmes On Multi-Storey Buildings
- Garnock Court, Irvine Housing Block Fatal Fire, 1999
 - Fire Started On 5th Floor
 - Within Ten Minutes Was At 12th Floor



■ Overcladding Systems (Refurbishment Applications)



- Cladding Systems Fixed To & Supported By A Structural Steel Frame (New Build)



Test Criteria (BR 135)

Celotex
Insulation Specialists



celotex.co.uk


SAINT-GOBAIN

Test Criteria (BR 135)

Celotex
Insulation Specialists



celotex.co.uk


SAINT-GOBAIN

- The Most Asked For Development Our Sales Team Request On A Monthly/ Daily Basis !
- Huge Trend Towards Concrete & Steel Frame Buildings
- Rigid Board As Sheathing To The Metsec Frame Is Critical From A U-value Perspective
- A Large Proportion Of Kooltherm Sales
- All Specs Are Either Rockwool Duo Slab or K15

- Launched in 2006 For Rainscreen Applications
- Supported By Testing To BS 8414-1:2002 Onto Masonry Substrate
- LABC Approval
- Created A Strong Perception On Fire-Safe Kooltherm Board
- System Used 6mm **Non-Combustible** Cladding As Façade
- Worth Circa £10M Per Annum

- Everybody Uses K15 As There Is No Alternative
- Nobody Understands The Test Requirements (Architects Ask If It Can Be Used Above 18m, The Answer is YES)
- Building Control Have Hugely Differing Levels Of Understanding On The Subject
- Give Us A Board That Is An Alternative To Kingspan & We'll Buy It !

- Cost - £25K
- System - 8mm Eternit Cladding
 - Lamatherm Fire Barriers
 - 100mm FR5000
 - Sheathing Board
 - Metsec Frame
- Result – Terminated After 25 Minutes, Flames Extending Test Facility

Mode Of Failure

Celotex
Insulation Specialists



celotex.co.uk


SAINT-GOBAIN

- Cost - £25k
- System - 12mm Eternit Cladding
 - Lamatherm Fire Barriers With 6mm Magnesium Oxide
 - 100mm FR5000
 - Sheathing Board
 - Metsec Frame
- Result – Passed (Completed 60 Minutes Testing)

Testing Part 2

Celotex
Insulation Specialists



celotex.co.uk


SAINT-GOBAIN

- Typical Ventilated Rainscreen System
- Large Amount (100mm) Of Combustible Insulation In The Cavity
- Passed Comfortably
- First PIR Board To Pass BS 8414 Series
- Growing Scepticism Over Rigid Board Testing

Launch Action Plan (Considerations)

Celotex
Insulation Specialists

- Product Name & Differentiation (Coding, SKUs)
- Pricing (Same As FR or Premium ?)
- Building Control Acceptance & Proof
- Sales Team Training
- CTC Enquiries
- Projects Between Now & Launch

celotex.co.uk


SAINT-GOBAIN