

# C S Stokes and Associates Limited

Mr C Stokes



E Mail: [carlstokes@firesafety-consultant.co.uk](mailto:carlstokes@firesafety-consultant.co.uk)  
<http://www.firesafety-consultant.co.uk>

Telephone:



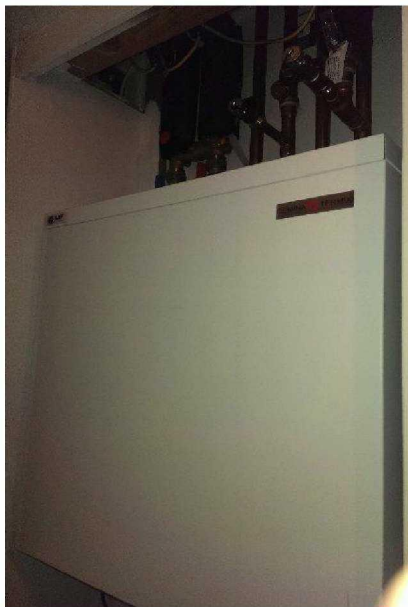
14<sup>th</sup> October 2015

Mrs J Wray  
TMO Health, Safety and Facilities Manager  
The Network Hub  
Kensington & Chelsea TMO  
292A Kensal Road  
London W10 5BE

**Subject:** HIU's within the flats of Grenfell Tower

Dear Janice,

Thank you for asking me to comment on the positioning of the Heat Interface Unit (HIU) within the individual dwellings of this building, the unit, please see a photograph below with the cover on and with it off, are mostly located in the hallway of each individual flat/dwelling. The locations can be seen in a typical flat layout drawing in Appendix A, position A is the hallway location and position B is the kitchen location.



The Building Control Officer has agreed that both locations, the hallway and the kitchen ones, both comply with the requirements of the Building Regulations.

I visited Grenfell Tower yesterday, Tuesday 13<sup>th</sup> October to look at the units in situ within three dwellings, I have no adverse comments to make about the positioning of the units as far as any fire safety aspects are concerned.

For your information within the three flats looked at, each flat is fire separated from the lift lobby area by a self closing 30 minute fire rated door and there is an electrical powered /operated domestic smoke detector/sounder located in the hallway of each flat by the HIU's, with an interlinked domestic heat detector/sounder in each kitchen.

The HIU's are electrically powered/operated with the fused spur located at high level on the hallway wall next to the units, please see the photograph below. The units do not protrude out into the hallway, they are contained within the cupboard space/area off the hallway. In the flats that I looked at yesterday the fire stopping of the pipes and any cabling through the any walls etc had been undertaken. I was told that the area above the unit, where the pipes are located in the 1<sup>st</sup> photograph will be covered over by a louvered door, as seen in the photograph below, top left hand side.



If a HIU is to be installed in the kitchen area of a flat it will be located in the position of the existing HIU, which will be removed, the kitchen located is behind a door in the wall or a panel which can easily be removed.

Please feel free to contact me if you require any further assistance on any of the comments that I have made,

Yours Sincerely

Carl Stokes

