

OFFICIAL - SENSITIVE

CRIP

Grenfell Tower Fire

COMMONLY RECOGNISED INFORMATION PICTURE

CRIP 8

Contact: Civil Contingencies Secretariat - [REDACTED]

Information correct as of 20 June 2017 at 1400

OFFICIAL - SENSITIVE

Page 1

Overview

- There are currently **14** casualties receiving inpatient treatment in 4 NHS hospitals of these, **7** are children. **8** patients are currently in critical care, of these 5 are children. The Met Police have said that the number of people presumed dead is 79. **The coroner does not expect this figure to rise significantly.**
- The Met Police remain in overall charge of the response while body recovery, disaster victim identification (DVI) and investigatory activities are undertaken at the scene. 40 sets of remains have been recovered so far. **London Fire Brigade are assisting DVI with body recovery from floors 17, 22 and 23; it is hoped that by the end of the week the body recovery teams will have finished on-site.**
- Services on the Hammersmith and City and Circle line remain suspended between Wood Lane and Edgware Road until further notice, due to the risk of falling debris.
- DCLG are working to carry out a rapid survey of similar at risk buildings in England. Initial figures suggest there are 18-21,000 high rise buildings used in whole or part for residential purposes (two-thirds in London), 600 of which have cladding.
- Structural monitoring of the building is ongoing. **USAR technicians removed a section of the external cladding from the west face of the building for testing by the Building Research Establishment (BRE). An interim BRE report will be published tomorrow.**

Summary of activity

Retrieval and identification of the dead

Building integrity	LFB	
Disaster Victim Identification	MPS	

Support for those affected

Central coordination on the ground	GOLD	
Rehoming victims as locally as possible within 3 weeks	DCLG / GOLD	
Covering temporary accommodation costs, and ongoing education disruption	GOLD	
Grenfell Residents Discretionary Fund	DCLG	
Ensuring victims access to personal accounts and pensions	HMT/ DWP	
Bellwin Scheme activated	DCLG	
Mental health / counselling support	DH	
Voluntary Sector coordination	GOLD	

What went wrong

Official investigations: fire, police	MPS/ LFB	
Public inquiry	CO	
Legal funding for victims	MOJ	

Reassurance for tower block residents

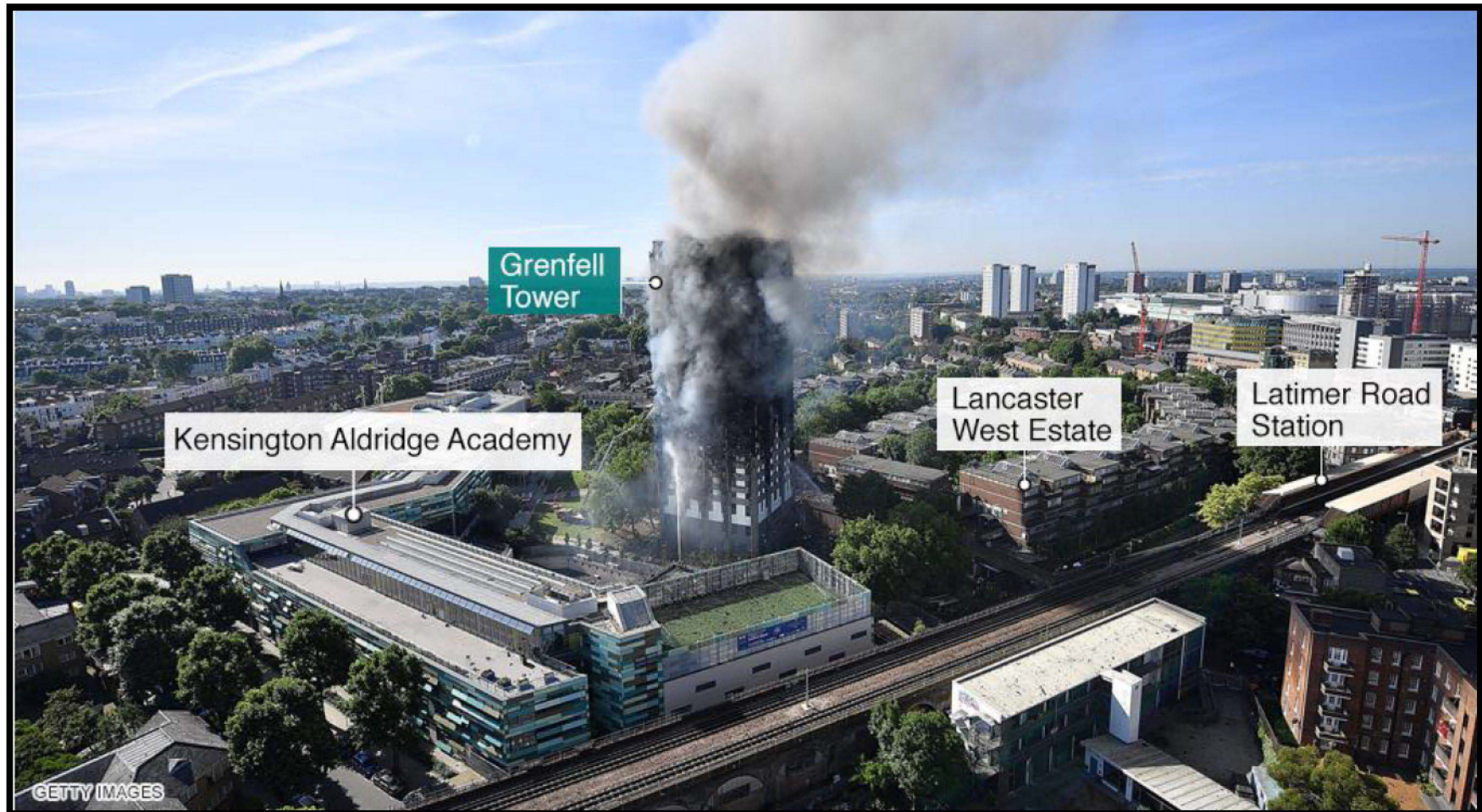
Identification of similar high rise flats	DCLG	
Identification of other 'at risk' buildings	CO	
Fire safety testing of materials	DCLG/ BRE	
Immediate public reassurance activity	DCLG	

RAG ratings represent perceived delivery risk based on departmental updates

OFFICIAL - SENSITIVE

Page 3

Map of Affected Area



OFFICIAL - SENSITIVE

Page 4

Support – Housing

HMG has committed that people whose homes have been destroyed will be rehoused in the local area within 3 weeks and that, in the longer term, they will be guaranteed a permanent social home in the area. Westminster City Council (WCC) is leading the rehousing operation.

Housing assessments:

- Needs assessments for people whose home has been destroyed by the fire (Category A) will be completed today
- 250 emergency hotel units are currently occupied

Procuring temporary accommodation:

- WCC is leading the operation to procure self-contained temporary accommodation in the private rented sector, with clear instruction to overbook to enable some choice for residents.
- 144 properties have been identified so far. 30 households have been matched to available properties.
- Offers and viewings with residents start this week. It is anticipated that some will start tomorrow.
- City West Homes (arm of WCC) are leading on; inspecting properties before viewings with residents; installing furniture and households necessities; accelerating refurbishment of some WCC/RBKC properties available.

Category B families:

- There are 845 households who live within the wider cordon (Category B).
- Team from City West Homes will start inspections of these homes to assess whether people can go (or stay home). Results of this will be critical to assessing the scale of the challenge.
- 394 properties do not have hot water, heating or gas, and therefore have limited cooking facilities. Anybody requesting emergency accommodation is being supplied with a hotel room. Options are being explored to resolve these issues, although the best case scenario is a minimum of three weeks to restore hot water.

Support – Housing numbers (as of 11am)

RESIDENTS	NUMBER OF HOUSEHOLDS NEEDING HOUSING	HOUSEHOLDS IN REST CENTRE	HOUSEHOLDS IN EMERGENCY ACCOMMODATION	HOUSEHOLDS NEEDING TEMPORARY ACCOMMODATION	HOUSEHOLDS COMPLETED NEEDS ASSESSMENT
GRENFELL TOWER	125 (+11 from Monday)	1	125 (+11 from Monday)		
GRENFELL WALK	13 (+1 from Monday)		13 (+1 from Monday)		
CORDON AREA	112 (+21 from Monday)		112 (+21 from Monday)		
TOTAL	250		250	217	101

TEMP ACCOM UNITS IDENTIFIED	TEMP ACCOM UNITS LET	PERMANENT SOCIAL HOUSING IDENTIFIED	SOCIAL HOUSING LET	HOUSEHOLDS NOT ACCEPTING 1 OR MORE OFFER	TOTAL HOUSED
144 (30 matched)	0	0	0	0	0

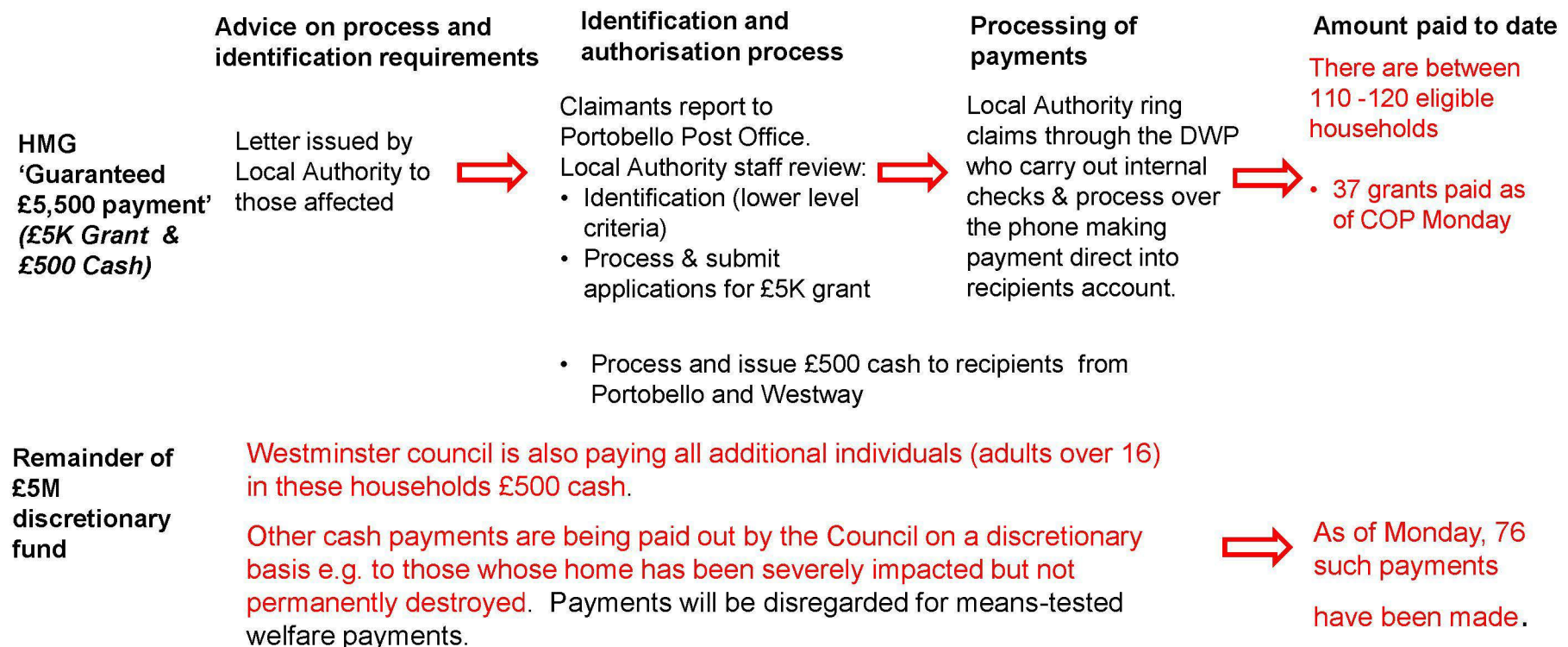
New Supply:

- Berkeley Homes has committed to turn over a near-complete low-rise block of 68 homes – workers are on-site now, accelerating completion.
- Negotiations are open with Capco and other housing providers are now in touch.

Financial Support to Victims

Victim Support Fund of £5m (to be kept under review): Every household whose home destroyed by fire to receive £5,500 from the fund. This figure is made up of two elements a £5k bank payment (or similar), and a £500 cash payment. **There is enough capacity to deal with claimants, who are being supported through the process by social and outreach workers.**

From Friday to Sunday ahead of the specific commitment of £5,500 per household being announced the Royal Borough of Kensington & Chelsea paid out £80K to affected households.



Other financial support elements

- Funding for legal representation for residents to ensure their voices are heard during the inquiry.

As of tomorrow, we will have a single figure to be reported at the end of each day and which will state the figure as at noon each day.

OFFICIAL - SENSITIVE

Page 7

Support – Health & Schools

Casualties receiving treatment:

- There are currently **14** casualties receiving inpatient treatment in 4 NHS hospitals; of these, **7** are children. **8** patients are currently in critical care; of these, 5 are children.

NHS support services in place:

- Enhanced mental health support for first responders, including the fire brigade and those working to support the bereaved, has been put in place by London's NHS Mental Health Services.
- The Central and NW London Foundation Trust have mental health staff, 7 nursing staff; 4 care managers; and 1 GP currently providing 24 hour support at the Community Rest Centre.
- A dedicated 24/7 NHS mental health response line is available
- Local NHS primary care services are providing enhanced support, including: primary care and pharmacy services at rest centres; round the clock GP support via NHS 111; and extended local GP opening hours
- The NHS London bereavement pathway is in place to provide support to bereaved families in the longer term. It will provide psychological support to families, in addition to the support they receive from MPS Family Liaison Officers (FLOs) and charities.

Support to Schools:

- Kensington Aldridge Academy (the school closest to the Tower) remains closed. DfE have seconded a project manager and project liaison coordinator to be based at the school and will provide the academy with a single point of contact.
- Ark Burlington Danes (ABD) and Latymer Upper School (LUS) are providing support. KS3 children have been accommodated at ABD and the 6th Form students at LUS.
- DfE will work with OFQUAL to ensure that the children receive the exam dispensation they are entitled to. There is a concern that only the basic dispensation will be offered when this is an unprecedented issue for exam boards.
- Psychological support and counselling has been offered to staff and children.
- Kensington Aldridge Academy had brief access to the site on the afternoon of 16 June and some extensive refurbishment will be required.

Support – Other

- The Grenfell Tower Fire Victim Support Unit has been set up in DCLG to act as a single point of contact for access to Central Government. The Unit is now operational and processing cases received via the Victims' Unit helpline and email address
- The Unit helps resolve a full range of issues victims face – from benefits and immigration, to health and education. Advice on contacting the Victims' Unit has been made available to GOLD and issued to key workers.
- DCLG have coordinated the deployment of over 20 Government staff to the Community Assistance Centre, as follows:
 - BEIS staff – dealing with consumer issues and affected local businesses
 - DWP staff – dealing with benefits issues
 - DfT staff – covering DVLA issues (fast track issuing of driving licences)
 - TfL staff – providing pre-loaded Oyster cards and replacement season tickets
 - HO staff – Immigration officers dealing with replacement passports, visas and other immigration issues
 - FCO staff – offering advice on foreign embassies, protocols and body repatriation
- DCLG have asked Departments (FCO, DH, DfT, BEIS) to continue to cover two shifts (09:00-17:00 and 14:00-21:00) at GOLD's request.

Investigations, Inquests and Inquiry

Investigations:

- The MPS have confirmed that a criminal investigation into the fire has been opened.
- The investigation by the Fire Service will report into MPS investigation.

Inquests:

- The Coroner, Dr Wilcox is prioritising ID and providing information to the families.
- Dr Wilcox will meet all the families individually when they come to view their loved ones' remains at the mortuary in due course. She will give them a personal letter of introduction at that time.
- In the meantime, contact on behalf of the coroner is through the normal routes i.e. via the police Family Liaison Officers (FLOs): the families are not being ignored. one from the wider community.

Public Inquiry:

- Draft terms of reference have been shared with the Lord Chief Justice.
- Discussions about a potential Chair are ongoing. It is hoped we will have a confirmed appointment very shortly.
- In parallel, work has begun to identify an Inquiry Secretary and other key members of the Inquiry team. We also hope to finalise these appointments very shortly.

Identification of similar buildings

- On Sunday we requested key information on similar buildings from all LAs and Housing Associations (HAs), to be returned by close Monday, to establish a detailed database on:
 - Whether any have similar cladding
 - Wider fire safety measures
- We are currently chasing returns from priority areas (including London, Birmingham, Newcastle, Manchester, Liverpool and the largest HAs), and expect to receive information from these areas by close of play today.
- AS OF 1200 TODAY: there had been 860 returns. 305 have said they have at least one or more tower blocks. 555 have said they have no tower blocks.
- English Housing Survey data gives a top down estimate of 600 residential tower blocks that are high rise (6 or more floors) and that have any type of cladding. This is sample data.
- Nearly two thirds of high rise blocks are in London with Yorkshire and Humberside and the North West, accounting for a further 15% between them
- Fire and Rescue Services are working with DCLG to assess high rise buildings with cladding.
 - A process for testing of cladding similar to the type used in Grenfell Towers is in place.
 - Premises identified by local authorities and housing associations as similar will be notified to Fire and Rescue Services who will carry out Fire Safety inspections (7.2.d)
 - Local Authorities will carry out necessary remediation works if panels are of the wrong type or if wider safety concerns are identified
 - Fire and Rescue Services will carry out a second inspection to check remedial action

Fire Safety Messaging

- DCLG expect that a level of reassurance will be necessary for residents living in high rise buildings (irrelevant of whether it's a building where cladding is not deemed safe).
- DCLG is developing core messaging to be used consistently by fire services, local authorities and housing associations to reassure residents, to issue by Wednesday
- We are developing minimum expectations for fire service inspection activity and gathering information around these activities to ensure a consistent approach is being taken across fire services.
- Fire and Rescue Services are taking local action to address issues and concerns highlighted by this incident, reviewing risk based inspection programmes, offering advice to residents of high rise buildings, undertaking Home Safety Visits and fitting smoke detectors.

Fire safety check tracker

Area	Number of similar buildings identified (approx.)	Number of similar buildings checked for cladding type	Number of buildings identified to have cladding incompatible with building regulations	Number of similar buildings checked for fire alarms and extinguishers	Number of similar buildings fitted with fire alarms and extinguishers
England	600	Unknown	Unknown	Unknown	Unknown
Wales	Unknown	Unknown	Unknown	Unknown	Unknown
Scotland	Unknown	Unknown	Unknown	Unknown	Unknown
Northern Ireland	Unknown	Unknown	Unknown	Unknown	Unknown

Media & Communications

Media coverage:

- The impact of the Finsbury Park attack and the start of Brexit talks have pushed Grenfell tower issues down the media agenda and off of the front pages. However widespread coverage does continue.
- Both broadcast and newspapers give widespread coverage to the more than £200,000 of emergency money has been handed out to 180 families affected by the tower block fire in west London.
- Following on from Panorama last night, BBC, report that the APPG urged the Government not to “wait for another tragedy” after the fatal fire in Lakanal House in south London in 2009, and called for stronger regulations on tower blocks.
- An MP from Kensington has told Sky News that some of the residents of Grenfell Tower have been sleeping in car parks and parks. Human rights barrister Michael Mansfield, and Emma Dent Coad MP came to speak with the community and pressed for more to be done by the Govt.
- The Telegraph and Guardian report that DCLG has written to local authorities telling them they must check materials used on the outside of their high-rises urgently
- The Times reports that some residents made homeless by the tragedy were stopped from claiming emergency payments yesterday as further confusion hindered relief efforts
- A letter sent by the Local Government Association chairman, Gary Porter, to council leaders in England and Wales and seen by the Guardian, claimed the communities secretary made the promise in a private conversation that councils will be fully reimbursed for any building work carried out on tower blocks that could face a similar fire risk to that of Grenfell Tower.
- There are many photos from the minute's silence at Grenfell Tower on Monday morning. The Daily Express shows tearful firefighters who had paused their work, standing by the hundreds of messages and floral tributes left at the site.

Communications

- Funded support for the web page is paying off with a three fold increase in traffic to the site as a result The average time that people as staying on the site - 4mins is also high.
- The Gold Comms Team plan to issue information (including funds disbursed etc.) twice daily in advance of the lunchtime and evening news bulletins.