

# LABC REGISTERED DETAILS DRAWING AND DOCUMENT LIST



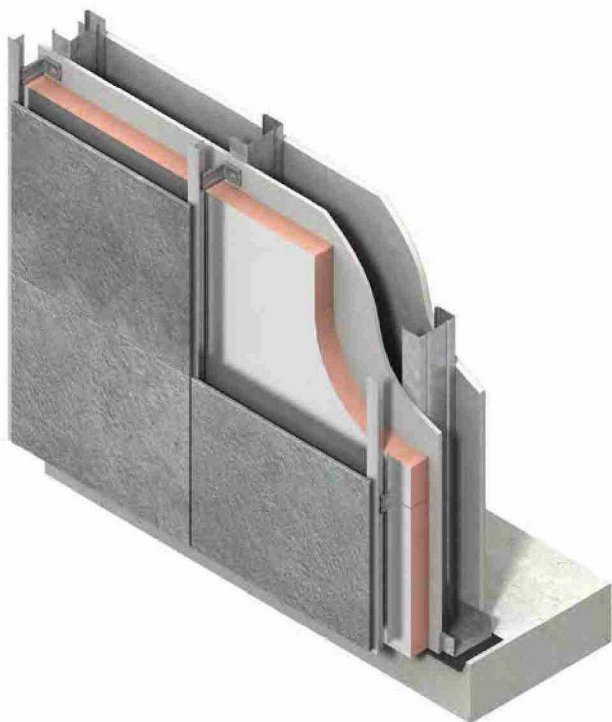
<b>RD Reference Number</b>	RD165 Kingspan Insulation Ltd Kingspan Kooltherm K15 Rainscreen Board
<b>Drawing Numbers</b>	N/A
<b>Supporting Documentation Reference Numbers</b>	Herefordshire Council Type Approval Summary Ninth Issue 2011 Kingspan publication "Kooltherm K15 Rainscreen Board" 08/4582; 27 <sup>th</sup> Oct 2008 British Board of Agrément Certificate
<b>Limitations of use</b>	<ol style="list-style-type: none"> <li>1. The design shown and the materials specified shall not be changed without reference to the local authority responsible for certifying the system.</li> <li>2. Where reference is made on a plan to any Code of Practice, British Standard or manufacturer's instruction it shall be construed as a reference to such publication in the form in which it is in force at the date of this certificate.</li> <li>3. This certificate should not be regarded as a formal approval under the Building Regulations.</li> </ol>
<b>Advice Notes</b>	Please see Appendix A
<b>Climatic Condition Details</b> e.g. wind speeds, height above sea level, exposure, etc.	Please see Appendix A

LABC  
66 South Lambeth Road, London SW8 1RL  
Tel: [REDACTED]  
Email: [rd@labc.uk.com](mailto:rd@labc.uk.com)  
Web: [www.labc.uk.com](http://www.labc.uk.com)

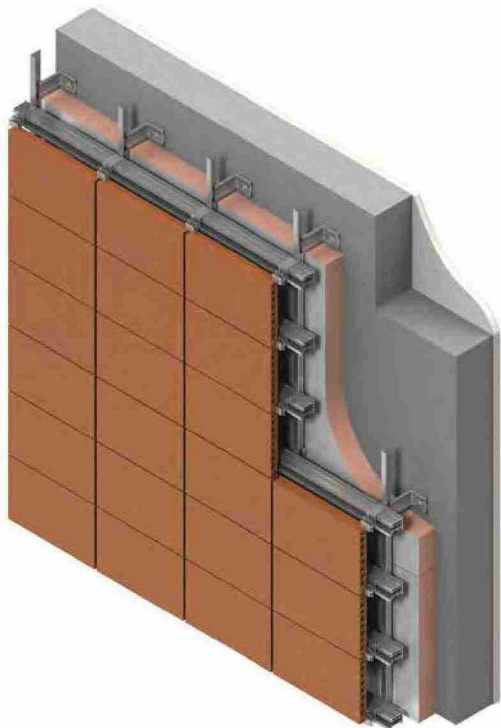
A SERVICE OF LABC – VAT REG NO. 867 4421 02  
LABC Registered Details Terms and Conditions Apply

## Appendix A

1. The product is suitable for use with a variety of outer claddings, including rainscreens (pressure equalised or drained and vented systems), and also can be used with masonry outer leaves with a 50mm clear cavity between the K15 and masonry.
2. The product is suitable for use in all wind exposures provided the fixing specification has been designed to meet the requirements of BS EN 1991-1-4 or BS 6399-2.
3. The product can be used on buildings with stories greater than 18m from ground level provided it is used in combination with suitably non-combustible substrates and ancillary components (note – BS 8414 testing referenced in section 7.1 of the BBA certificate is noted as meeting requirements of BRE 135, i.e. alternative compliance route referenced in Approved document B or Scottish Technical Handbook).
4. The product has a “Class 0” or “Low Risk” classification in accordance with the requirements of Approved Document B for England & Wales or the Section 2 of the Scottish Technical Handbook respectively.
5. The product has a 0 ozone depletion potential, and global warming potential of less than 5. Additionally for BREEAM assessments the product has a A+ rating in the BRE’s Green Guide to Specification.



**Fig. 1 – K15 Steel Frame**



**Fig. 2 – K15 Terracotta Tile**