

Outgoing Email

from

Matt Smith

on

13/09/2013 11:57

Create Mail Reply

File Ref 1 Structural Engineer

File Ref 2 None

File Ref 3 None

To: Stefano.Strazzullo@curtins.com

cc: "Tom Ashton" <Tom.Ashton@curtins.com>; bruce@studioe.co.uk; CN=Duncan Campbell/O=MaxFordham@MaxFordham

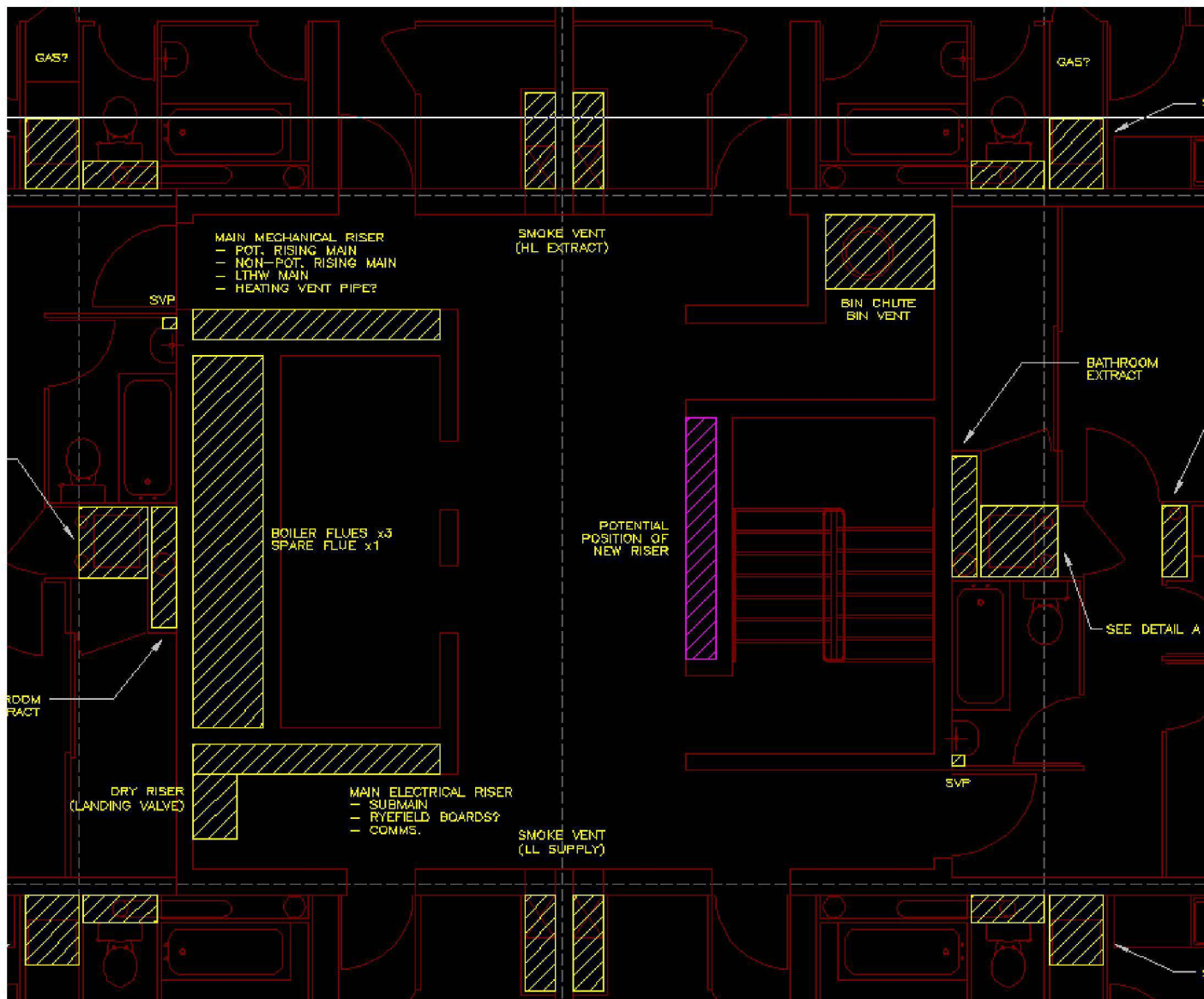
Subject: Grenfell Tower - alternative riser position

Associated Documents

created by: Matt Smith on 13-Sep-13

Morning Stefano

We'd like your view on the alternative riser position marked on the drawing below. Previously we'd proposed a location adjacent to the dry riser but would like a bit more horizontal area. We'd still be happy if it had to protrude into the lobby area from the alcove as I assume this is structural. This location would also have to be coordinated with Bruce's access to the stair at Walkway +1.



To prevent overheating of the lobbies from the higher temperature heating mains we have proposed that the smoke extract system be used to ventilate these areas. If this is not acceptable to Building Control however then an alternative method would be required. One way to achieve this would be to have the heating mains rising in a continuous fire protected shaft from which we could extract the heat from above. This would be a larger opening than the core drilled holes previously discussed with you. Would you be able to comment on the feasibility of this?

Kind regards,

Matt

MAX FORDHAM

42-43 Gloucester Crescent

London

NW1 7PE

T

F

maxfordham.com

Max Fordham LLP is a Limited Liability Partnership. Registered in England and Wales Number OC300026
Registered office 42-43 Gloucester Crescent, London, NW1 7PE