

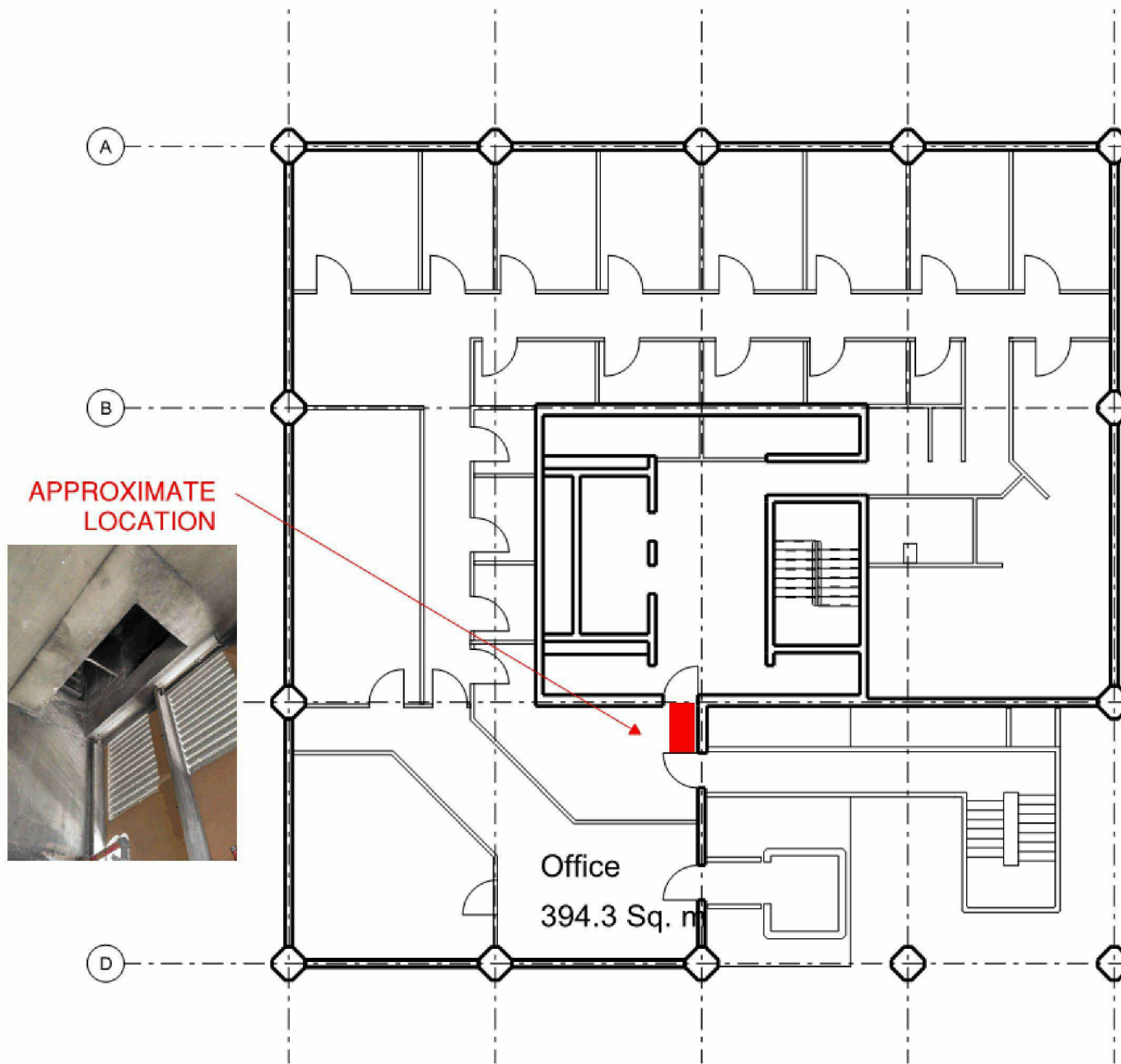
| | |
|--|---|
| <div>Outgoing Email</div> <div>from</div> <div>Matt Smith</div> <div>on</div> <div>23/02/2015 16:01</div> <div>Create Mail Reply</div> | <div>File Ref 1 Client</div> <div>File Ref 2 None</div> <div>File Ref 3 None</div> <div>To: "Claire Williams" <clwilliams@kctmo.org.uk></div> <div>cc: CN=Duncan Campbell/O=MaxFordham@MaxFordham</div> <div>Subject: Grenfell Tower - Smoke extract supply shaft</div> |
|--|---|

Associated Documents

created by: Matt Smith on 23-Feb-15

Afternoon Claire

Further to our phone conversation, this is the position and image of the shaft which JSW suggested had been ear marked for being blocked up. This should be checked with your fire consultant/building control/fire officer as appropriate to ensure that this is the correct course of action as it is outside of our expertise. The shaft is the air path for the natural supply air to the smoke extract system.



WALKWAY +1 LEVEL

Kind regards,

Matt

MAX FORDHAM
42-43 Gloucester Crescent
London

NW1 7PE

T

F

maxfordham.com

Max Fordham LLP is a Limited Liability Partnership. Registered in England and Wales Number OC300026
Registered office 42-43 Gloucester Crescent, London, NW1 7PE