

Grenfell Tower Regeneration Newsletter

November 2014



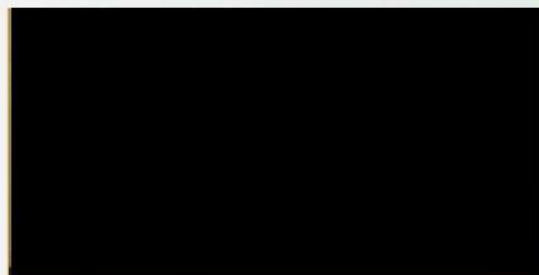
What's been happening?

Planning changes: there are minor changes to the previous planning approval. You'll be sent a formal letter about this in the next couple of weeks.

Lifts: please don't press any lift button more than once as holding one down is causing the lifts to break down.

Paying for heating and hot water: most of you told us you would prefer to pay for your heating and hot water by how much you use, instead of pro rata (proportional cost depending on the size of your home). The TMO will be discussing this soon.

Respite from noise: we know the work being done to the building can be noisy, so you are still welcome to use the community rooms and a nearby flat for some peace and quiet. A ground floor flat in Whitchurch House is available 9am-4pm. It's nicely furnished and has a sofa and television; tea and coffee are also available. If you would like to use it please contact Rydon's resident liaison officers.



A resident enjoying the benefits of
the respite flat

Consultation: on 21 October we held a consultation to discuss the changes to the tower. Some of you were concerned about how the pipes for the new heating system will look in your homes. Therefore you can see the proposed layout of the pipes and radiators in flat 145 from next month onwards. Each household will be shown designs of the pipework and you'll be asked for your sign off before the installations begin.

Demolition work: the lift to the right of the old main entrance has now been removed and demolition has started on the lift shaft. Some of the walls in the lower ground floors are also being demolished to create new flats, a nursery and boxing club facilities.

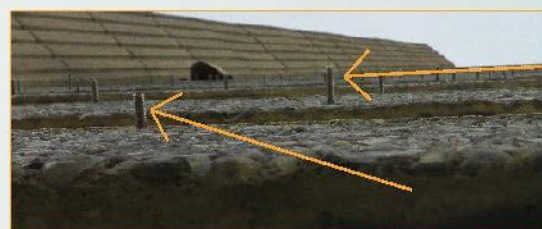
Hoarding: hoarding of the tower and playground is well underway. This is to secure the work area, especially now the Kensington Aldridge Academy has opened. Also, a protective barrier has been placed at the entrance of the tower whilst the mast climber is being erected.



Protective barrier at the entrance to the tower



Three steel containers have been placed on the playground to store Rydon's building materials



Anchors to support the cladding frame on the building are being installed. This will be done by the end of January

Lift lobby areas: fitting of the new vertical heating pipes will be done by the end of this month. The horizontal pipes which will connect the vertical heating pipes to flats are also being fitted. Work on this started at the top floor and has now reached the twelfth floor.



Vertical heating pipes



Horizontal heating pipes

A career in construction: Rydon is recruiting for Live Train, a 10-12 week construction programme that offers experience and training to start a career in construction. For more information on how to join, please contact Rod Shepherd at rod.shepherd@sdplastering.co.uk.

So, what's next?

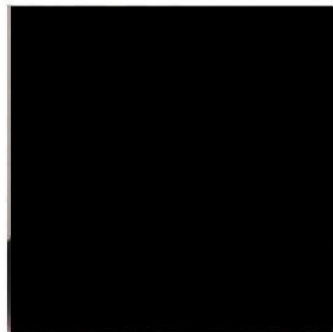
1. New heating and windows: in the new year we'll be connecting the communal heating pipes to individual flats and we'll also be installing double glazed windows. In order to do this Rydon will need access to your home and they will be in touch once work is due to start.
2. Home visits: we need access to all flats in order to survey them. Please call Rydon's resident liaison officers immediately to book a home visit if you have not yet had one; otherwise, regrettably we may be obliged to take legal action to prevent work from being delayed. This will incur costs to the resident concerned. The deadline to access all flats was 31 October.
3. Lift lobby areas: three holes will be drilled above every flat door. This is to connect the communal heating pipes to individual flats. Rydon will send you a letter about when this will happen.
4. Demolition work: the top two flights of stairs will be removed from the staircase to the right of the main entrance.
5. Mast climbers (the scaffold towers which will support the access platforms): the final mast climber will go up on the south side of the building (above the main entrance) in the new year.
6. Rydon's Resident Liaison Office: the opening of this new office is delayed until January because of the work on the ground floor.
7. Satellite dishes and communal TV sockets: there's an integrated reception system (IRS) on the roof. This gives each household access to an unrestricted choice of radio and television channels including; FM/DAB radio, Freeview, Sky+ and Hotbird.

We've also installed additional satellite dishes on the roof (below) for residents who were subscribed to foreign language channels. Once the cladding goes up, you cannot attach foreign dishes or aerials to the building exterior.



Contact details

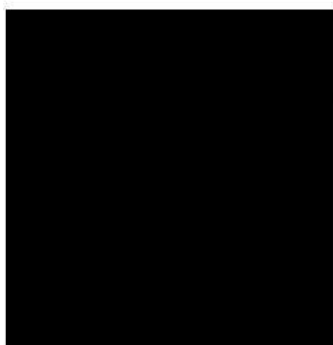
Rydon



Christina Stephanou
Resident Liaison Officer



yourcommunity@rydon.co.uk



Maxine Igbinedion
Resident Liaison Officer



yourcommunity@rydon.co.uk

KCTMO

Claire Williams
Project Manager



clwilliams@kctmo.org.uk

Siobhan Rumble
Lancaster West
Area Manager



srumble@kctmo.org.uk

Peter Maddison
Director of
Assets and Regeneration



pmaddison@kctmo.org.uk

You can connect to the IRS or the dishes on the roof via the digital socket in your living room. Each household can install their choice of digital or satellite receiver (e.g. Sky box). If you don't have a digital socket in your living room, please contact Claire Williams, Project Manager.



Kensington Aldridge Academy and Grenfell Tower at 2.38pm on 24 November. To access the live webcam visit <http://rbkc.regenology.co.uk/#linkLive>