



Grenfell Tower Regeneration Newsletter December 2014



The TMO and Rydon would like to wish you a merry Christmas and a happy New Year. Thank you for your patience and co-operation over the last year; we look forward to working with you again next year.

Rydon's Christmas opening hours: Rydon staff will be on site until 12pm on Tuesday 23 December. They will return on 5 January 2015.

- Lancaster West Estate Office Christmas opening hours:
- 12pm on 24 December: office closed
- 25-26 December: office closed
- 29 December - 12pm on 31 December: office open
- 12pm on 31 December - 2 January: office closed
- 5 January: office re-opens.

Drop-in session on 22 December

Come along to our consultation drop-in session at 10.30am-12pm or 5-7pm on 22 December. We'll look at the proposed layout of the new pipes and radiators in flat 145. This layout is a little different from the one shown before; this is because the heat interface unit (the main point of control for the new heating system) will be in a different place. This should cause less disruption because it will not interfere with the existing layout in your kitchen. A drawing of the new windows will also be on display and you'll be able to see a sample in the New Year.



New resident liaison officer: Rydon will be appointing a new resident liaison officer in the New Year to replace Maxine Igbinedion. Maxine will be working at another site, so we're sorry to see her go. She was a friendly and familiar face around the tower. Christina Stephanou is still here, so if you have any concerns or questions do speak to her.

Health and wellbeing survey: the Council will be redoing the prize draw in the New Year because not enough surveys were completed.

What's been happening?

Main entrance: as you all know the door entry system to the tower has not been working for a while. The damaged cables have been replaced, so we're pleased that it's working again.

Demolition work: a scaffold has been erected on the staircase to the right of the main entrance; the lift and its shaft and top the two flights of stairs will be removed. Some internal walls on the lower ground floors are also being demolished to allow the new flats and boxing club to be created. The Council's Building Control department is carrying out regular inspections to ensure the quality of work done. We've also appointed two clerk of works for this.

Lift lobby areas: the new vertical heating pipes have now been fitted. These pipes will be enclosed by a cupboard in the New Year. Work on the horizontal pipes which will connect the vertical pipes to flats is well underway.



The new heating pipes

New flats and boxing club: internal walls are being created in the new flats and boxing club on the lower ground floors.



Partitions inside new flats on the lower ground floors



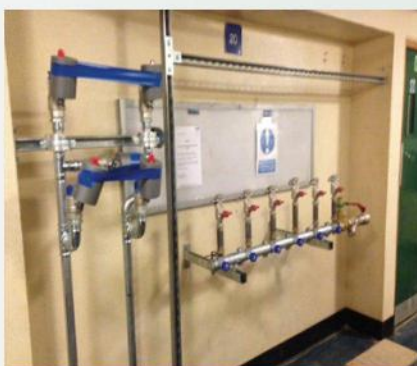
Changing room walls in the new boxing club

Numbering for new flats and boxing club: we're applying to the Council for the new flats, nursery and boxing club to have a Grenfell Tower address. We're proposing to number them 1-10, to fit in with the existing numbering system.

So what's next?

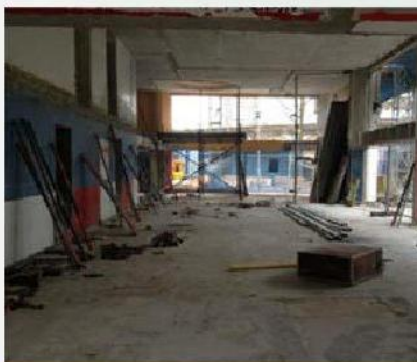
Home visits: Rydon needs access to all flats in the New Year to install the new heating pipes and radiators, door entry handsets and double glazed windows. They will write to you about this closer to the time.

New heating system: installation of the cold water main will start in January 2015. The manifolds which will connect the cold water main to individual flats have been fitted.



Manifolds have been fitted to each lift lobby area

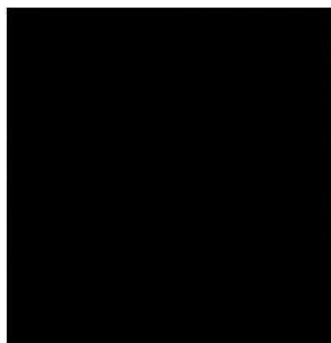
New flats and boxing club: installation of heating and electrical wiring in the new flats and boxing club will start in the New Year. Steelwork will be installed at the mezzanine floor in order to create a new lift lobby area. There will be four new flats on this floor.



The mezzanine floor as it looks now

Contact details

Rydon



Christina Stephanou
Resident Liaison Officer



yourcommunity@rydon.co.uk

KCTMO

Claire Williams
Project Manager



clwilliams@kctmo.org.uk

Siobhan Rumble
Lancaster West
Area Manager



srumble@kctmo.org.uk

Peter Maddison
Director of
Assets and Regeneration
pmaddison@kctmo.org.uk

Emergency numbers



Kensington Aldridge Academy and Grenfell Tower at
12.49pm on 18 December. To access the live webcam visit
<http://rbkc.regenology.co.uk/#linkLive>