

## 3000 SERIES

### INSTALLATION INSTRUCTIONS

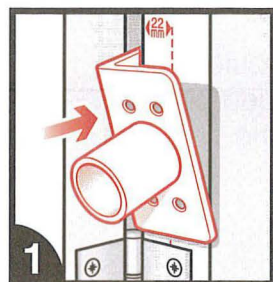


**ISOQAR**

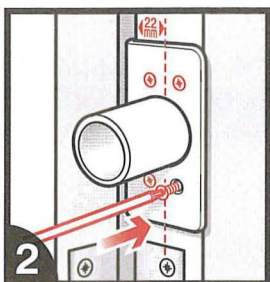
REGISTERED

Cert No 5893  
ISO 9001

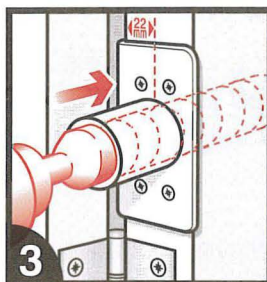
#### INSTALLING YOUR DOOR CLOSER USING FITTING JIG AST9003 (Supplied Separately)



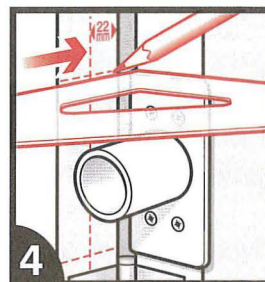
1 Offer up the fitting jig to the door leaf with the lip on the knuckle side of the door just below or above the middle hinge. The centre line should always be 22mm from the knuckle side of the door.



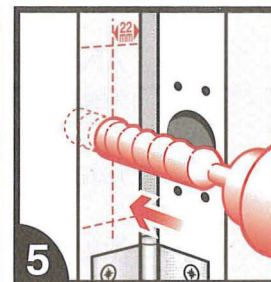
2 Fix using 4 screws.



3 Drill the hole for the closer body using the Lewis auger bit.



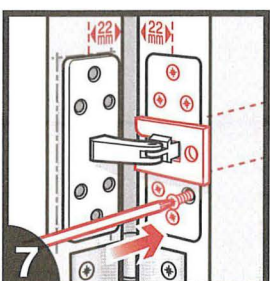
4 Mark the top and bottom edges level and square across to the door frame. Mark a centre line 22mm from the knuckle side of the frame.



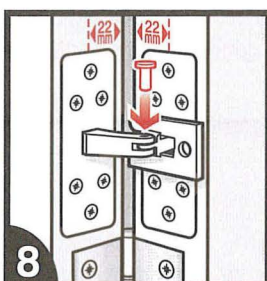
5 Drill out a centre hole 15mm diameter to a depth of 10mm.



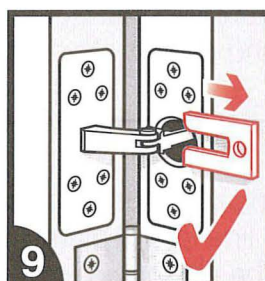
6 Cut out the area required to house the fixing plates on both the door leaf and the door frame.



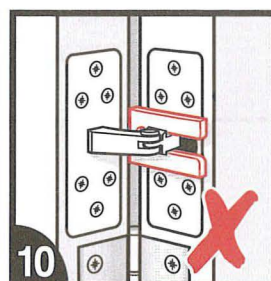
7 Insert the body of the closer into the door leaf, with the retaining plate facing you, and screw fix.



8 Attach the links together using the top hat pin supplied.



9 Remove the retaining plate. Ensure that it is kept in a safe place in case it is necessary to remove the closer from the door at any time.



10 Installing the closer the wrong way will result in failure and is not covered by any warranty or guarantee.  
**Note: The 'Astra England' stamp may be upside down, depending on the handing of the door.**

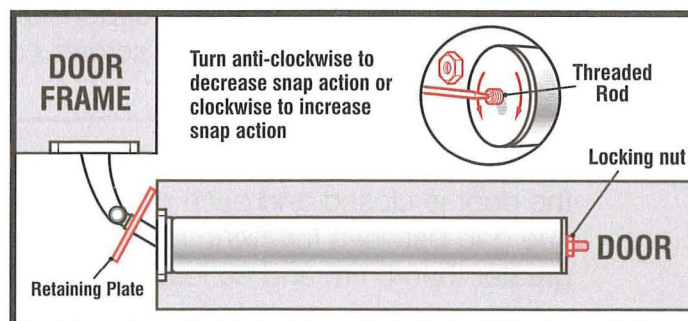
#### ADJUSTING THE SNAP ACTION

##### Prior to installation

The closer latching is factory set to give 5° of snap action. Remove the small locking nut on the threaded rod at the end of the body.

Using a small flat screwdriver turn the threaded rod anti-clockwise to decrease or clockwise to increase the 'snap action'.

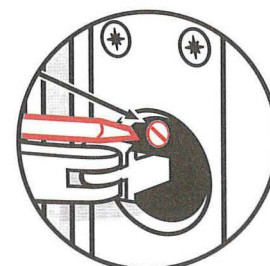
After adjustment always replace the locking nut prior to installing the closer in the door.



#### ADJUSTING THE DOOR CLOSING SPEED

Once installed, the closing speed may be adjusted.

A closing speed adjustment pin is located inside the body of the closer, above or below the fixing link. The closing speed can be altered by opening the door to 90° and turning the adjuster pin with a small flat screwdriver clockwise to decrease speed or anticlockwise to increase speed. When adjusting the closing speed, please be aware that very slow settings may effect the performance of the closer. It is recommended not to set a closing speed of less than 6 seconds.



For Declaration of Performance see [www.astradoorcontrols.com](http://www.astradoorcontrols.com)



## 3000 SERIES

### INSTALLATION INSTRUCTIONS

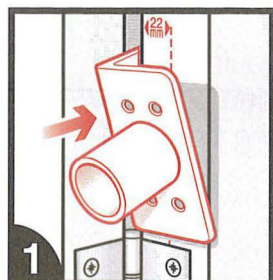


**ISOQAR**

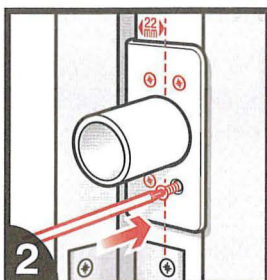
REGISTERED

Cert No 5893  
ISO 9001

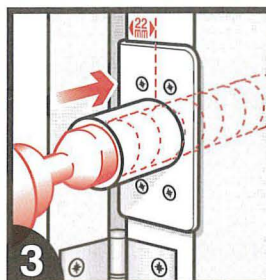
#### INSTALLING YOUR DOOR CLOSER USING FITTING JIG AST9003 (Supplied Separately)



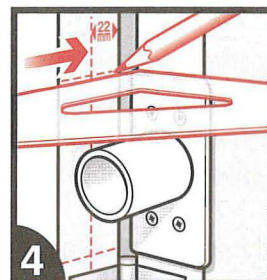
Offer up the fitting jig to the door leaf with the lip on the knuckle side of the door just below or above the middle hinge. The centre line should always be 22mm from the knuckle side of the door.



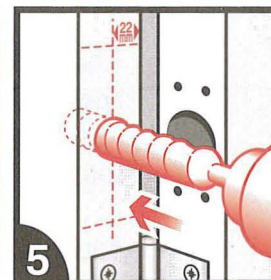
Fix using 4 screws.



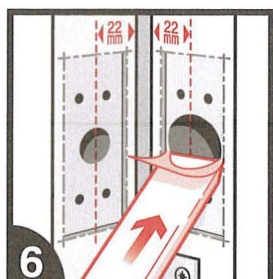
Drill the hole for the closer body using the Lewis auger bit.



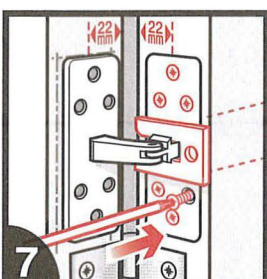
Mark the top and bottom edges level and square across to the door frame. Mark a centre line 22mm from the knuckle side of the frame.



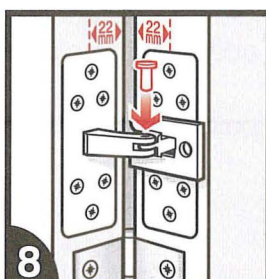
Drill out a centre hole 15mm diameter to a depth of 10mm.



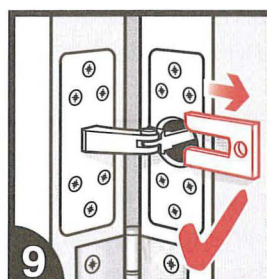
Cut out the area required to house the fixing plates on both the door leaf and the door frame.



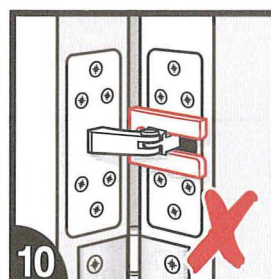
Insert the body of the closer into the door leaf, with the retaining plate facing you, and screw fix.



Attach the links together using the top hat pin supplied.



Remove the retaining plate. Ensure that it is kept in a safe place in case it is necessary to remove the closer from the door at any time.



Installing the closer the wrong way will result in failure and is not covered by any warranty or guarantee.  
**Note: The 'Astra England' stamp may be upside down, depending on the handing of the door.**

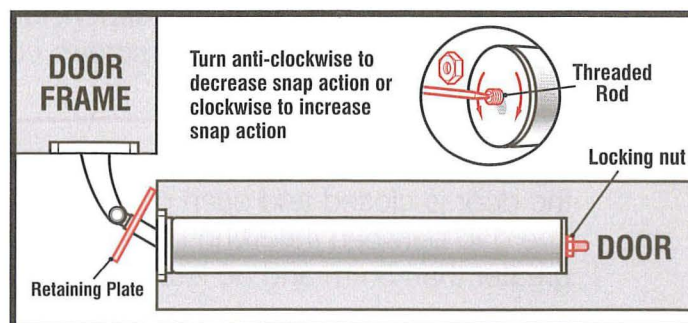
#### ADJUSTING THE SNAP ACTION

##### Prior to installation

The closer latching is factory set to give 5° of snap action. Remove the small locking nut on the threaded rod at the end of the body.

Using a small flat screwdriver turn the threaded rod anti-clockwise to decrease or clockwise to increase the 'snap action'.

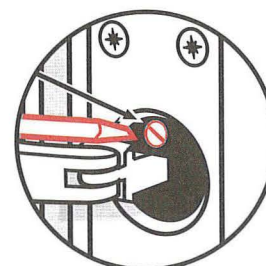
After adjustment always replace the locking nut prior to installing the closer in the door.



#### ADJUSTING THE DOOR CLOSING SPEED

Once installed, the closing speed may be adjusted.

A closing speed adjustment pin is located inside the body of the closer, above or below the fixing link. The closing speed can be altered by opening the door to 90° and turning the adjuster pin with a small flat screwdriver clockwise to decrease speed or anticlockwise to increase speed. When adjusting the closing speed, please be aware that very slow settings may effect the performance of the closer. It is recommended not to set a closing speed of less than 6 seconds.



For Declaration of Performance see [www.astradoorcontrols.com](http://www.astradoorcontrols.com)