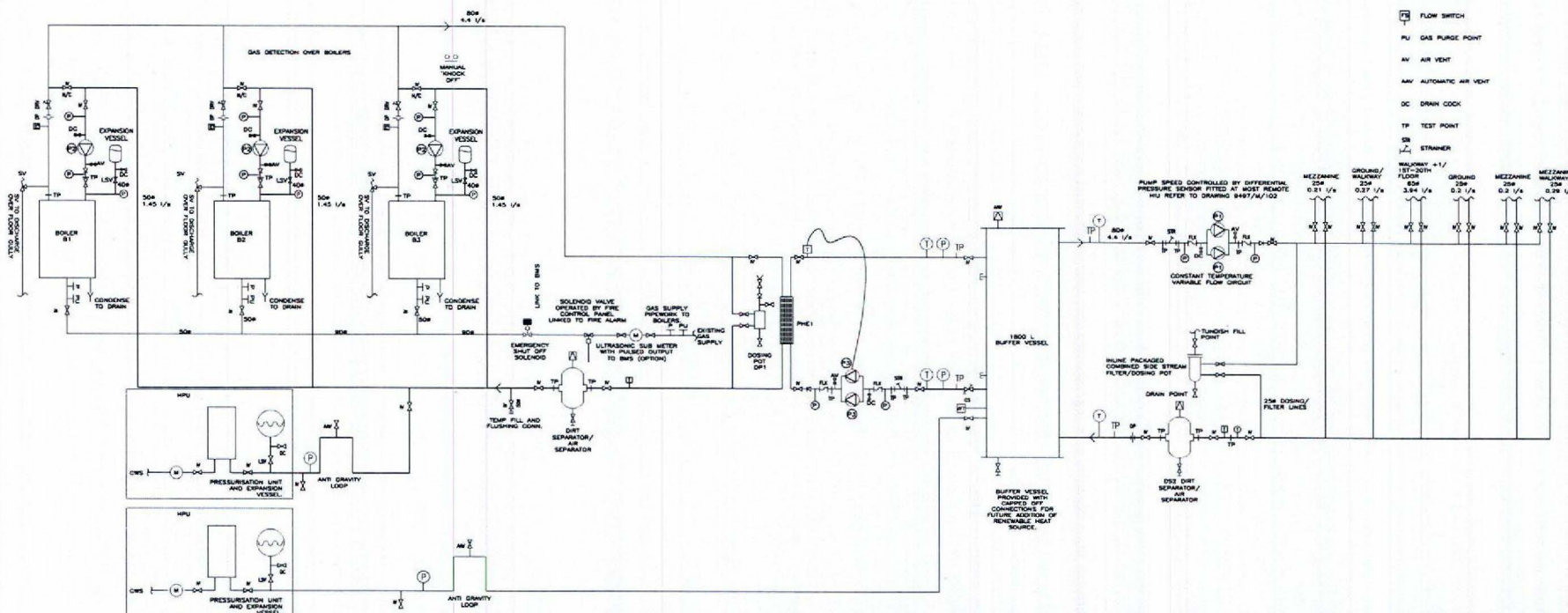


BOILER SCHEDULE				
No. OFF	MANUFACTURER	MODEL	DUTY	MAX OPERATING PRESSURE
3	HOVAL	ULTRAGAS 200	200kW	5.0 Bar

SIDE STREAM FILTER/DOSING POT SCHEDULE		
No. OFF	MANUFACTURER	MODEL
1	VEXONT	X-POT COMBINED SIDE STREAM FILTRATION AND DOSING POT, MAX WORKING PRESSURE 7 Bar



- KEY
- RETAINED HEATING SYSTEM
 - NEW HEATING SYSTEM
 - FLOW DIRECTION ARROW
 - NEW GAS BOILER
 - PUMP
 - ISOLATION VALVE
 - NORMALLY CLOSED ISOLATION VALVE FOR SYSTEM FLUSHING
 - ISOLATION VALVE FULL BORE QUARTER TURN ISOLATION VALVE
 - TWO PORT MOTORIZED VALVE
 - THREE PORT MOTORIZED MIXING VALVE
 - THREE PORT MOTORIZED DIVERTING VALVE
 - DRAIN DOWN POINT
 - VARIABLE ORIFICE DOUBLE REGULATION VALVE WITH MEASURING POINTS
 - TEST POINT
 - FLEXIBLE CONNECTION
 - PRESSURE GAUGE
 - TEMPERATURE GAUGE
 - TEMPERATURE SENSOR
 - AIR BOTTLE
 - CHECK VALVE
 - SAFETY PRESSURE RELEASE VALVE
 - CONSTANT FLOW CONTROL VALVE
 - EXPANSION VESSEL
 - DIFFERENTIAL PRESSURE SENSOR FOR VARIABLE SPEED PUMP CONTROL
 - HEAT METER
 - DOUBLE REGULATING VALVE
 - ORIFICE PLATE
 - FLOW SWITCH
 - PU GAS PURGE POINT
 - AV AIR VENT
 - AMV AUTOMATIC AIR VENT
 - DC DRAIN COCK
 - TP TEST POINT
 - SN STRAINER

NOTES

REV	DESCRIPTION	DATE	INITIAL	NOTED
A	REVISED TO SUIT NEW LAYOUT	08/10/14		

DRAWING STATUS: FOR APPROVAL

Rydon

J S WRIGHT & CO LTD
BUILDING SERVICES ENGINEERS

Atlas Building
16 Portland Street
Birmingham
B6 5RX
Telephone:
Focalline:
E Mail: jswright@jswright.co.uk
Internet: www.jswright.co.uk

CONTRACT: GRENfell TOWER

TITLE:
PROPOSED PLANTROOM
SCHEMATIC

DATE: SEPT. 14	DRAWN: D.B
SCALE: N.T.S	VERIFIED: D.B
DRAWING No: 9497/M/100	REV: A

ARCHITECTS DRS. No.:

PSB000000396/1