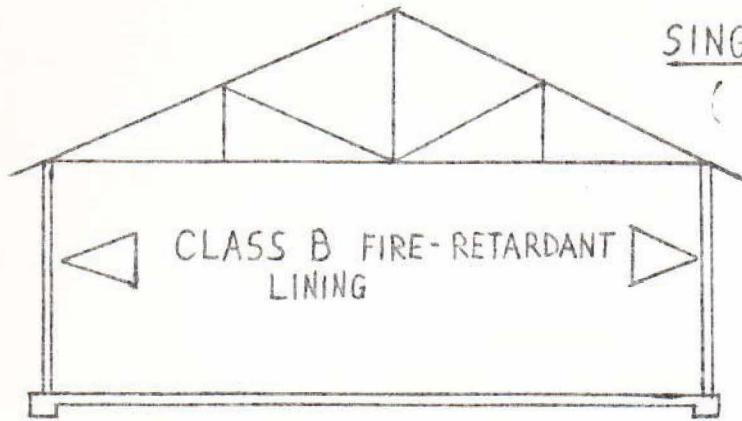


(PDH-03 )

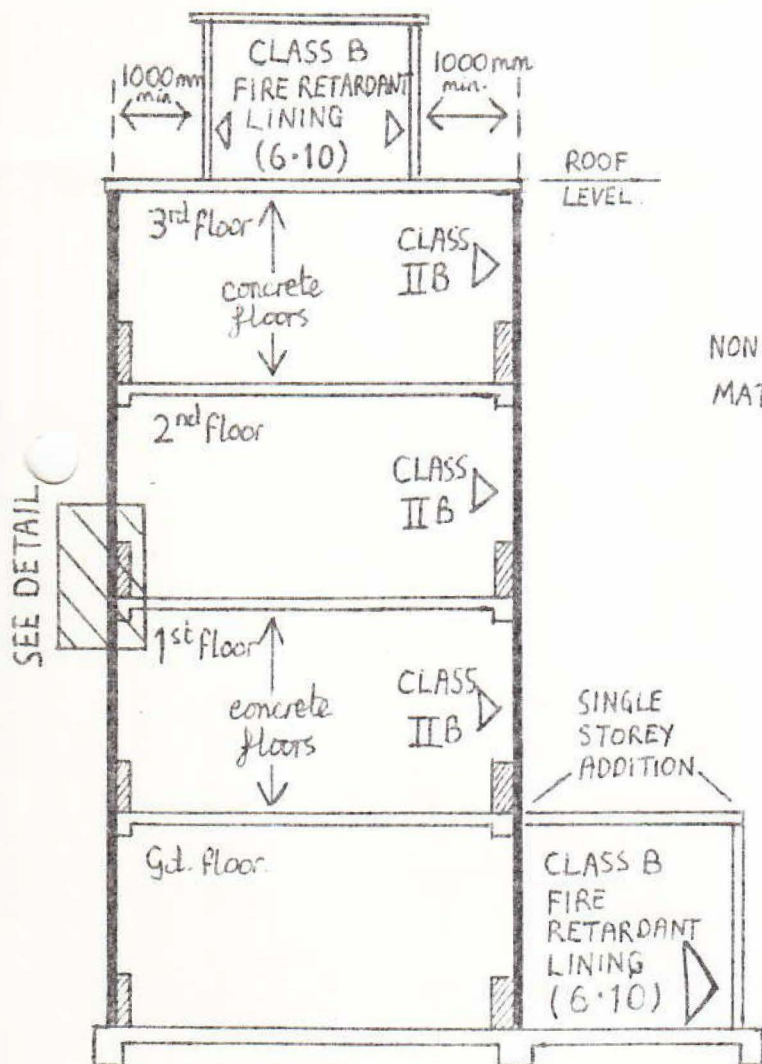
## **GLC tutorials illustrating external enclosures**

CLASS II B ENCLOSURES



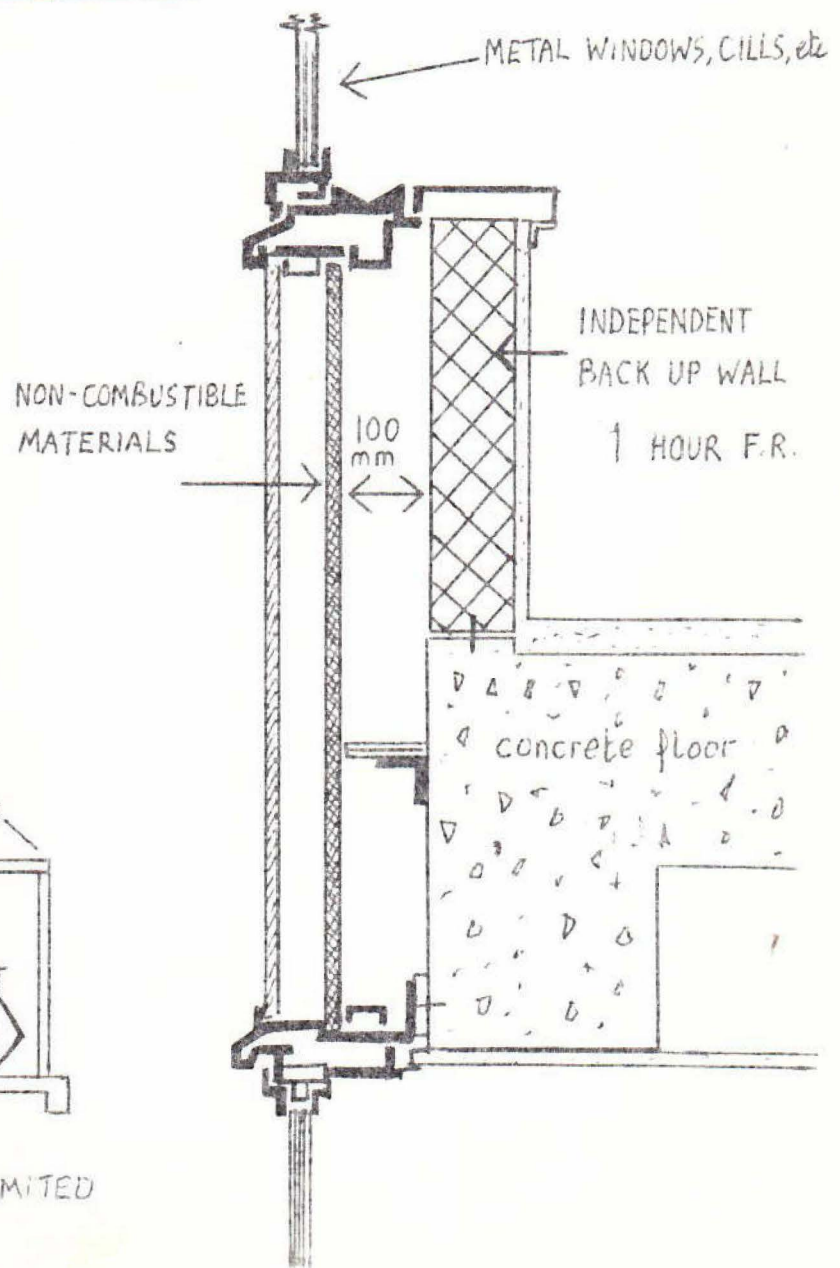
SINGLE STOREY BUILDING • By LAW 6-10  
(for use classes see By law 6-13.

## MULTI STOREY BUILDING



WHOLLY OFFICES OR DWELLINGS - UNLIMITED  
HEIGHT - NO SITE RESTRICTIONS

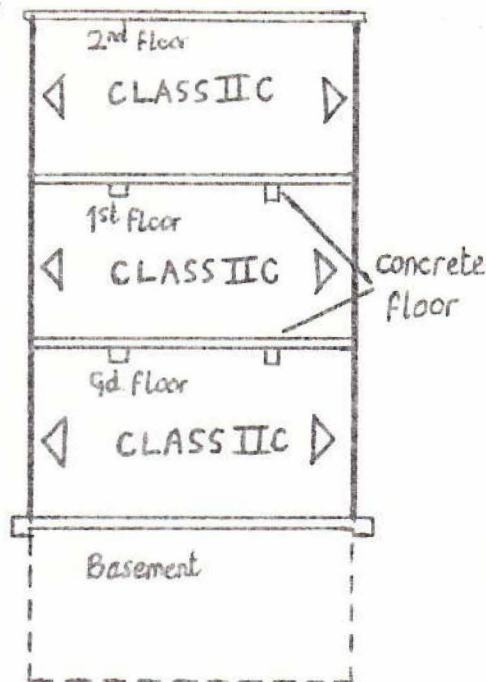
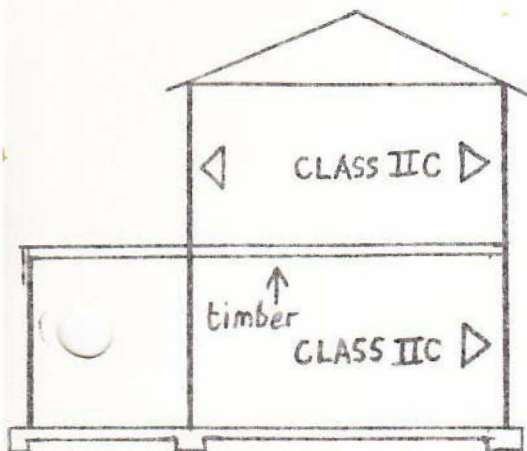
DETAIL



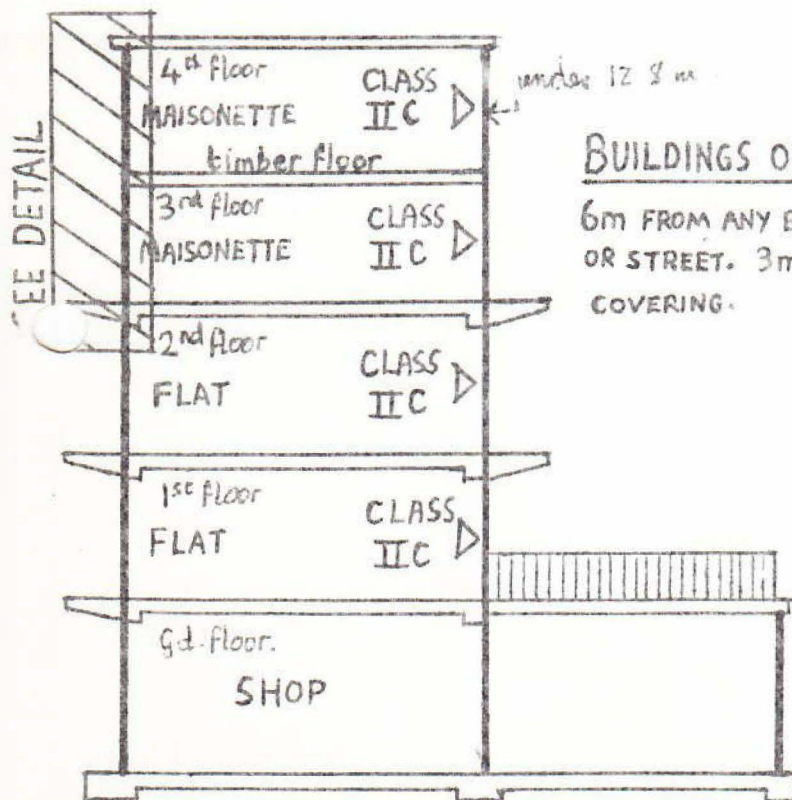
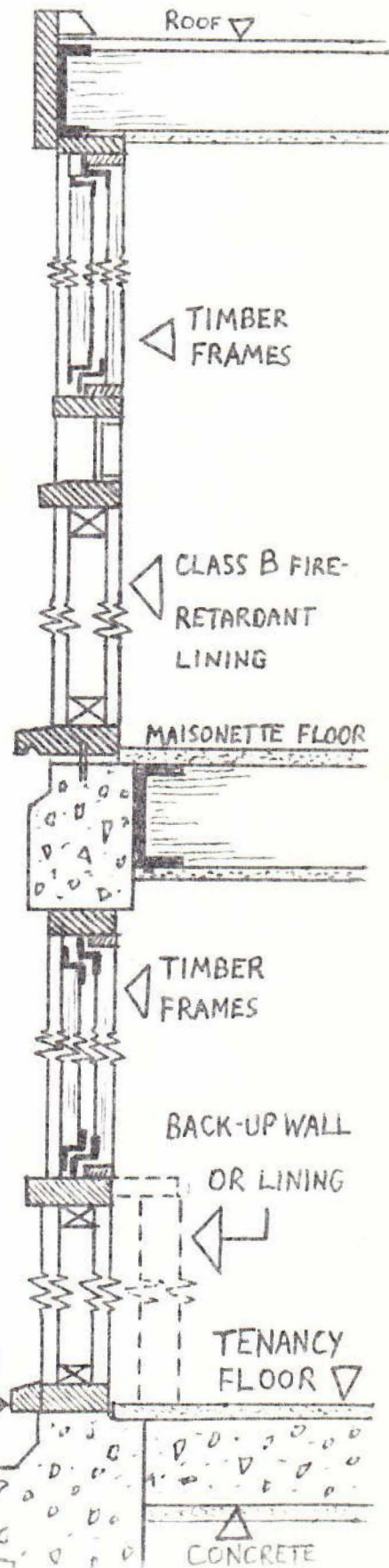
# CLASS IIC ENCLOSURES

## 2 AND 3 STOREY DWELLINGS OR OFFICES

3m FROM ANY BUILDING, BOUNDARY, OR STREET;  
1.5m IF NON-COMBUSTIBLE COVERING



## DETAIL



## BUILDINGS OVER 3 STOREYS

6m FROM ANY BUILDING, BOUNDARY, OR STREET. 3m IF NON-COMBUSTIBLE COVERING.

RESIDENTIAL BLOCK EXCEEDING  
3 STOREYS MUST HAVE  
HORIZONTAL PROJECTION

