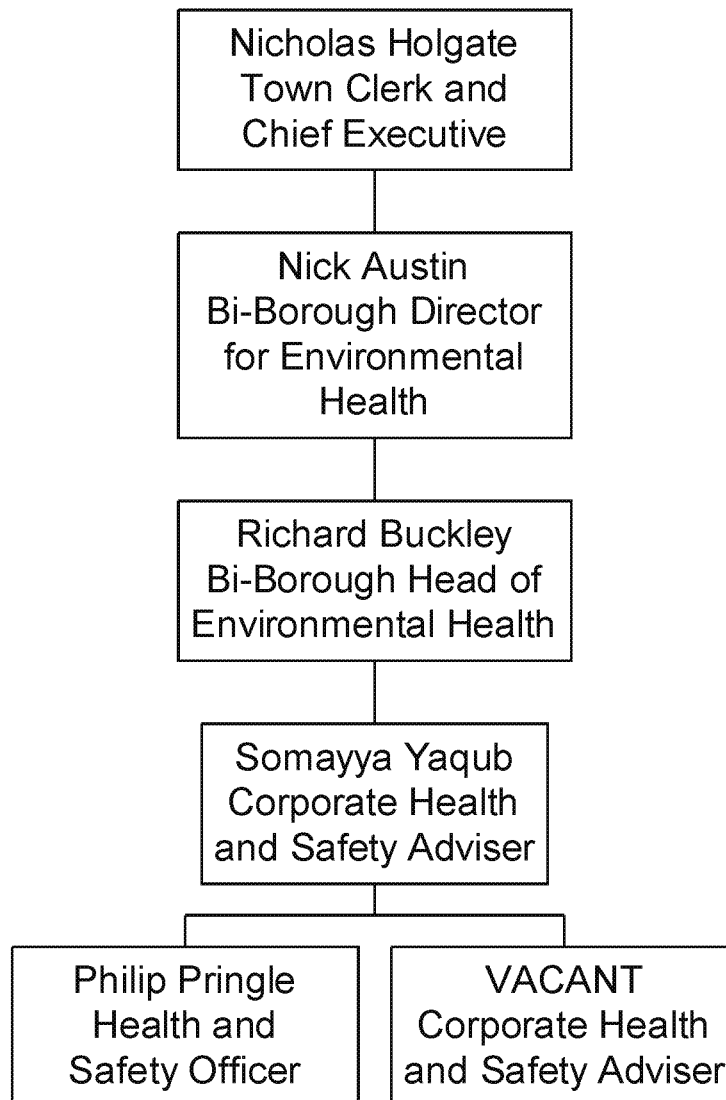
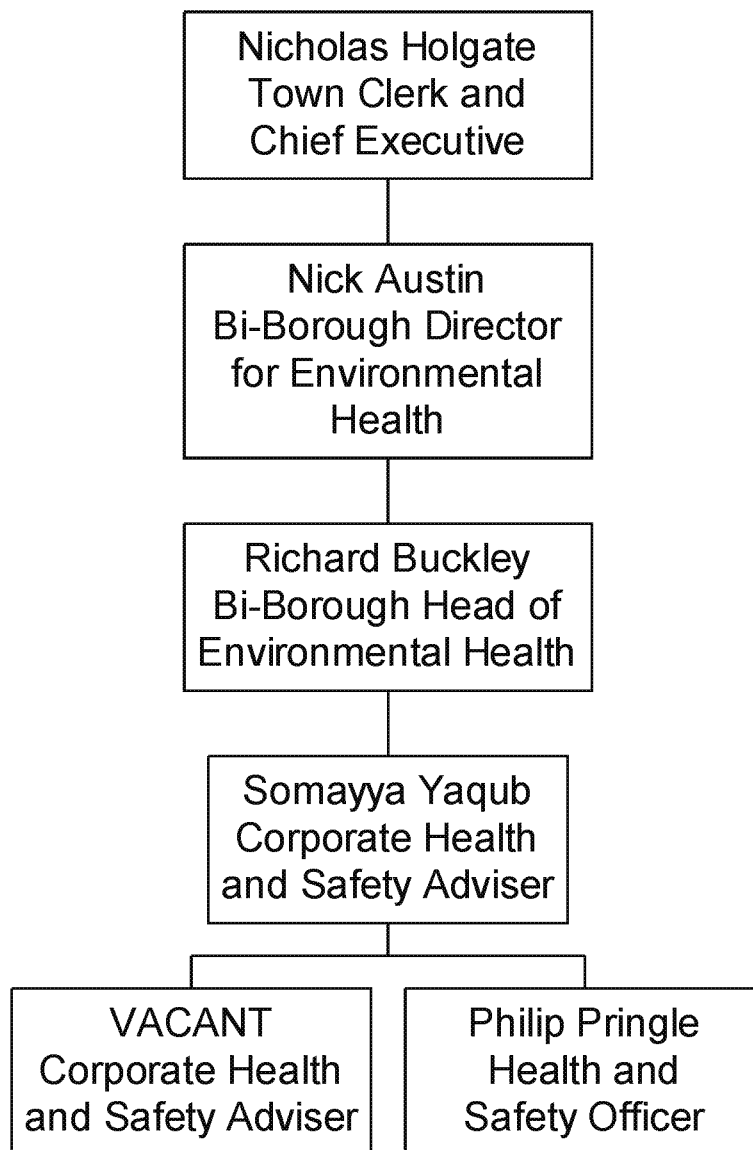


## Corporate Health and Safety (2017) - Bi-borough service



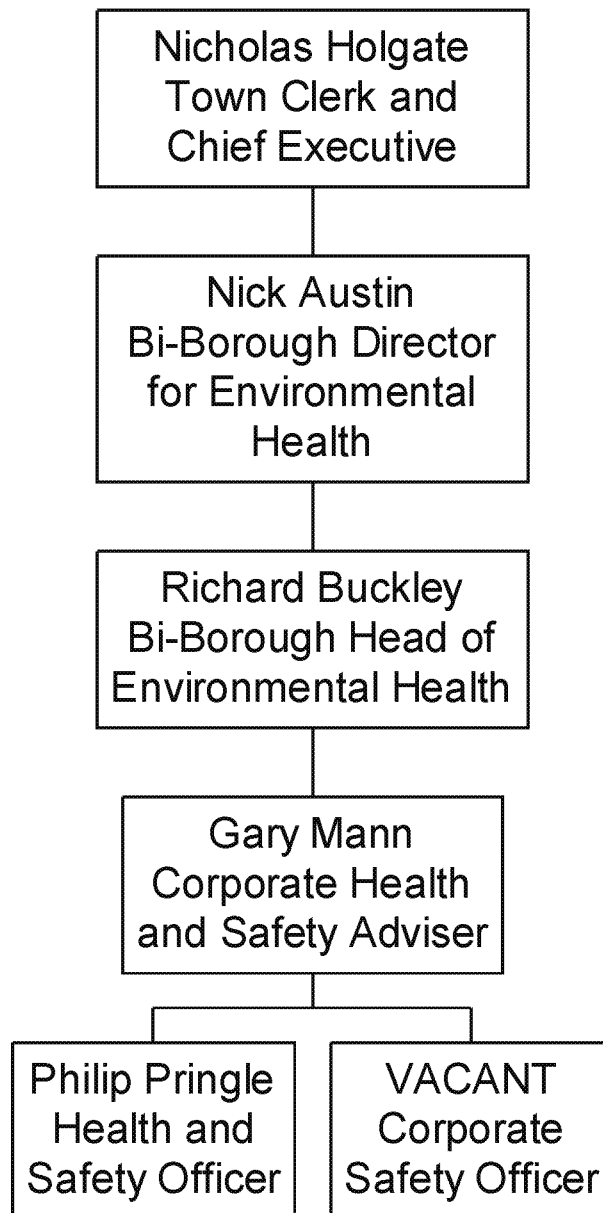
As at 31/03/17

## Corporate Health and Safety (2016) - Bi-borough service



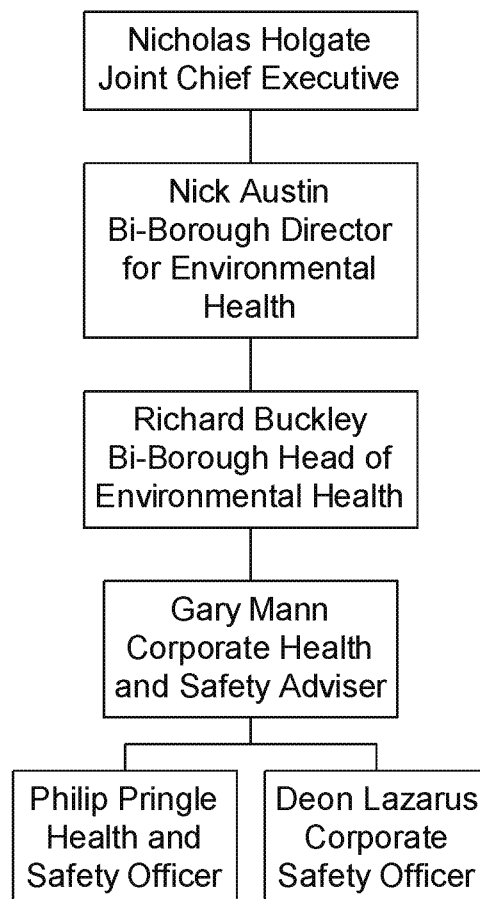
As at 31/03/16

## Corporate Health and Safety (2015) - Bi-Borough service



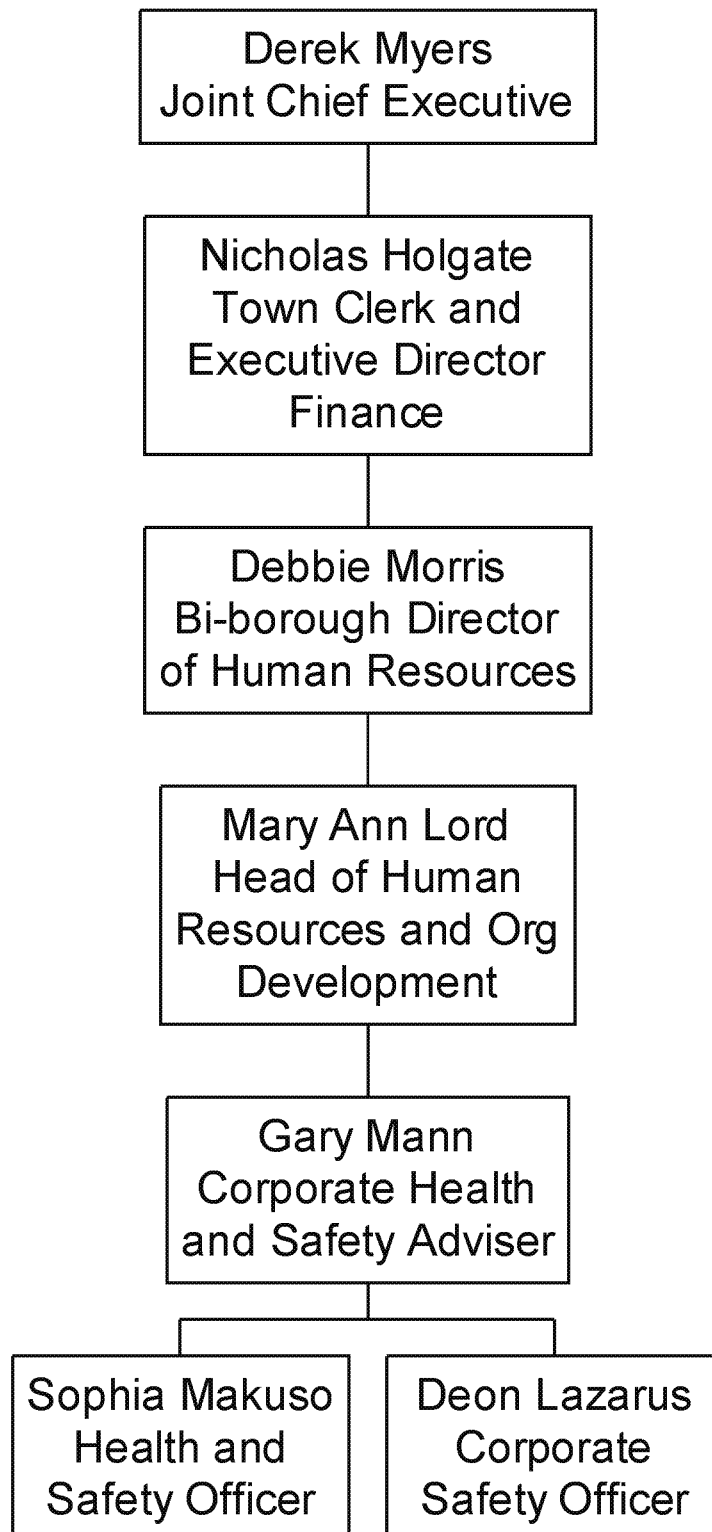
As at 31/03/15

## Corporate Health and Safety (2014) - Bi-Borough service (from Feb 2014)



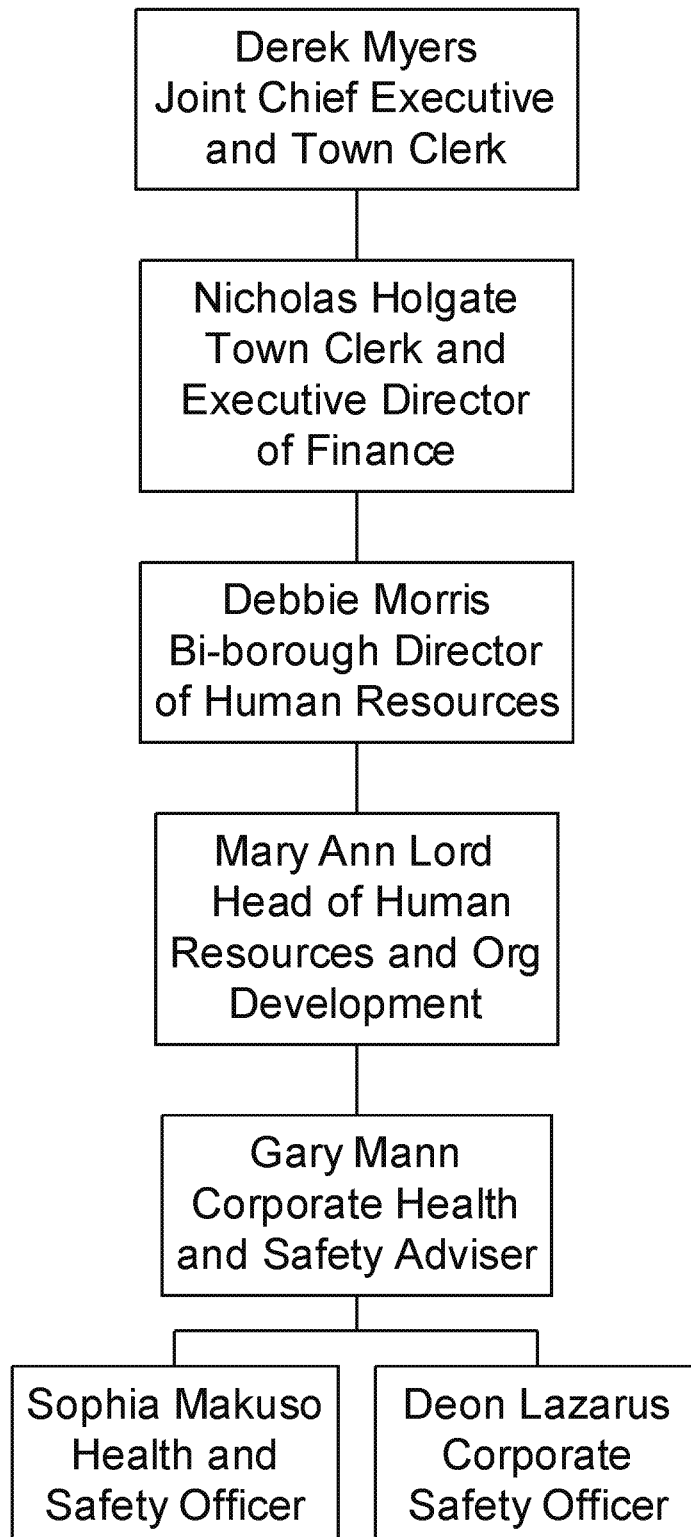
As at 31/03/14

## Corporate Health and Safety (2013)



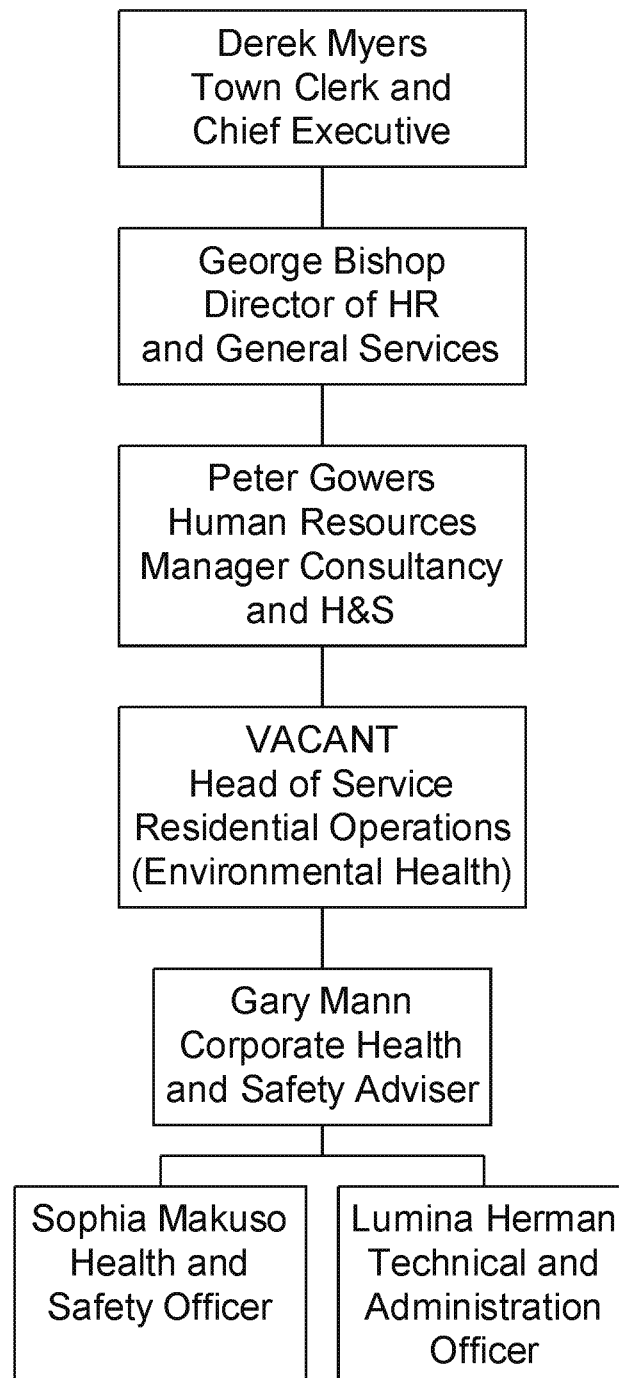
As at 31/03/13

## Corporate Health and Safety (2012)



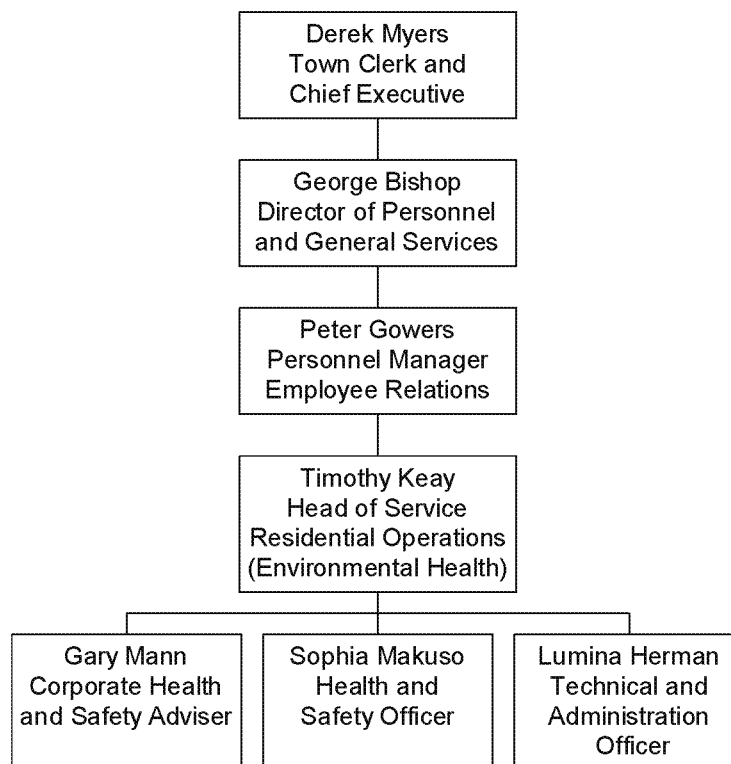
As at 31/03/12

## Corporate Health and Safety (2011)



As at 31/03/11

Corporate Health and Safety (2010)



As at 31/03/10