

PROPOSED TYPICAL BAY

Composite Zinc Column Cladding
pitched / tapered to match
existing column profile:
(Quartz)

Trickle Ventilation

Fixed Fin Brise Soleil

Lockable restricted tilt & turn
windows

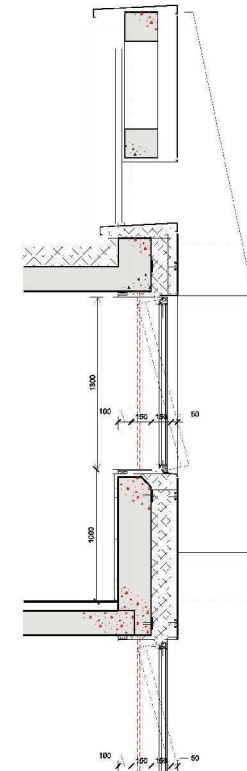
Inward opening Casement
windows for purge ventilation

Composite Zinc Column Cladding:
(Quartz)

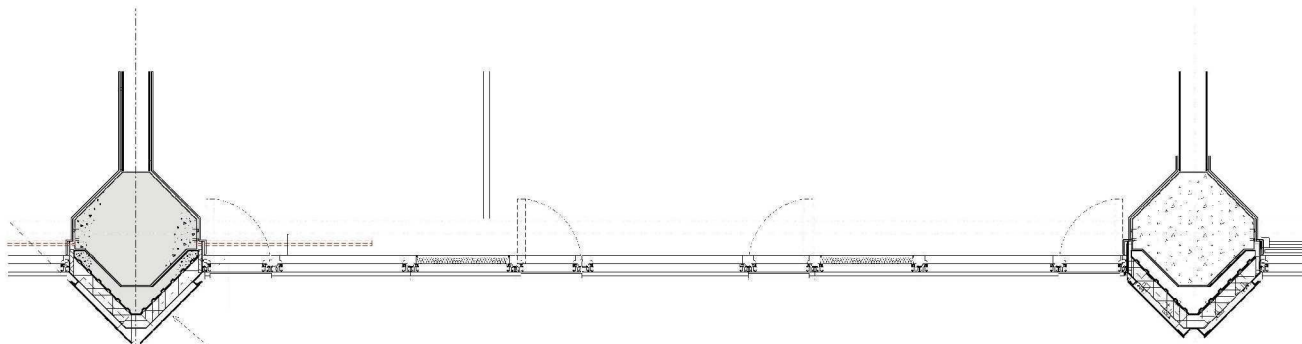
Composite Zinc Spandrel Panel:
(Quartz)

PPC Aluminium Flashing

Glazed in HPL screen



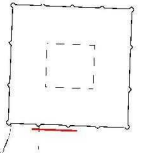
PROPOSED DETAIL SECTION



PROPOSED DETAIL PLAN

Insulated Rainscreen overcladding
(Composite Zinc panels - Quartz)
(Folded PPC Aluminium Flashings - Charcoal)

- NOTE
1. THIS DRAWING IS COPYRIGHT © 14030 E.L.L.P.
 2. THE CONTRACTOR MUST NOT SCALE FROM THIS DRAWING. ALL DIMENSIONS TO BE TAKEN FROM DIMENSION LINES.
 3. WHERE ANY DISCREPANCIES ARE FOUND BETWEEN DIMENSIONS THERE MUST BE REFERENCE TO THE ATTENTION OF THE ARCHITECT FOR RESOLUTION.
 4. WHERE DISCREPANCIES EXIST BETWEEN REFERENCE OR ASSEMBLY DRAWINGS & DETAIL DRAWINGS, THE LATTER TAKE PRECEDENCE.



00 170613 FOR INFORMATION



FOR INFORMATION

STUDIO E LLP

Palace Wharf, Trafalgar Road,
London, W8 6BT
Tel: 020 7478 1000
Fax: 020 7478 1001

GRENFELL TOWER
REGENERATION PROJECT

PROPOSED PART
PLAN & ELEVATION

DRAWING

1:20@A1 28/01/13
SCALE DATE

1279 SK085 00
DWS NO. REVISION CREATED