

Smoke Detection

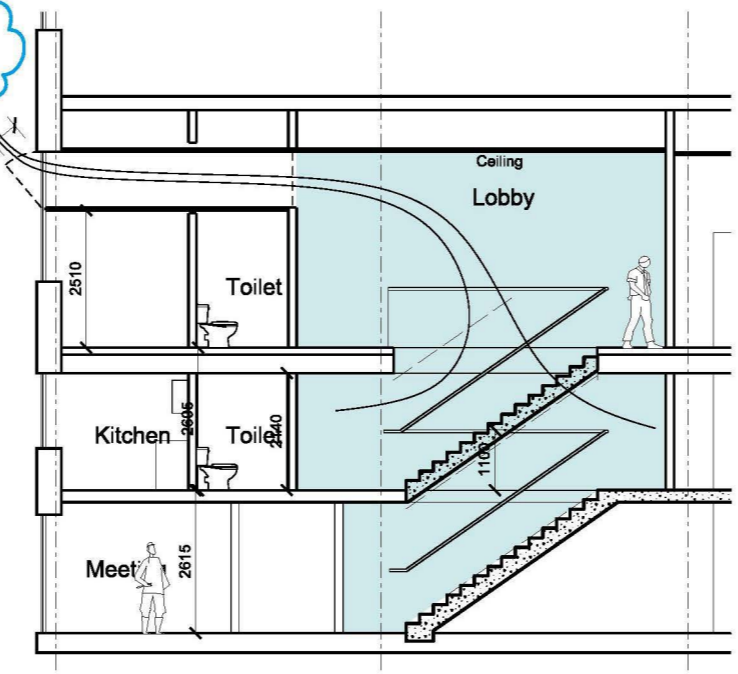
System complying with BS 5839-1

To activate powered vent and natural vent systems

Smoke Detection
System complying with BS 5839-6 Grade D Category LD3

Exit signs
To BS 5499: Part 1 or BSEN 7010 and sized to BS 5499: Part 4

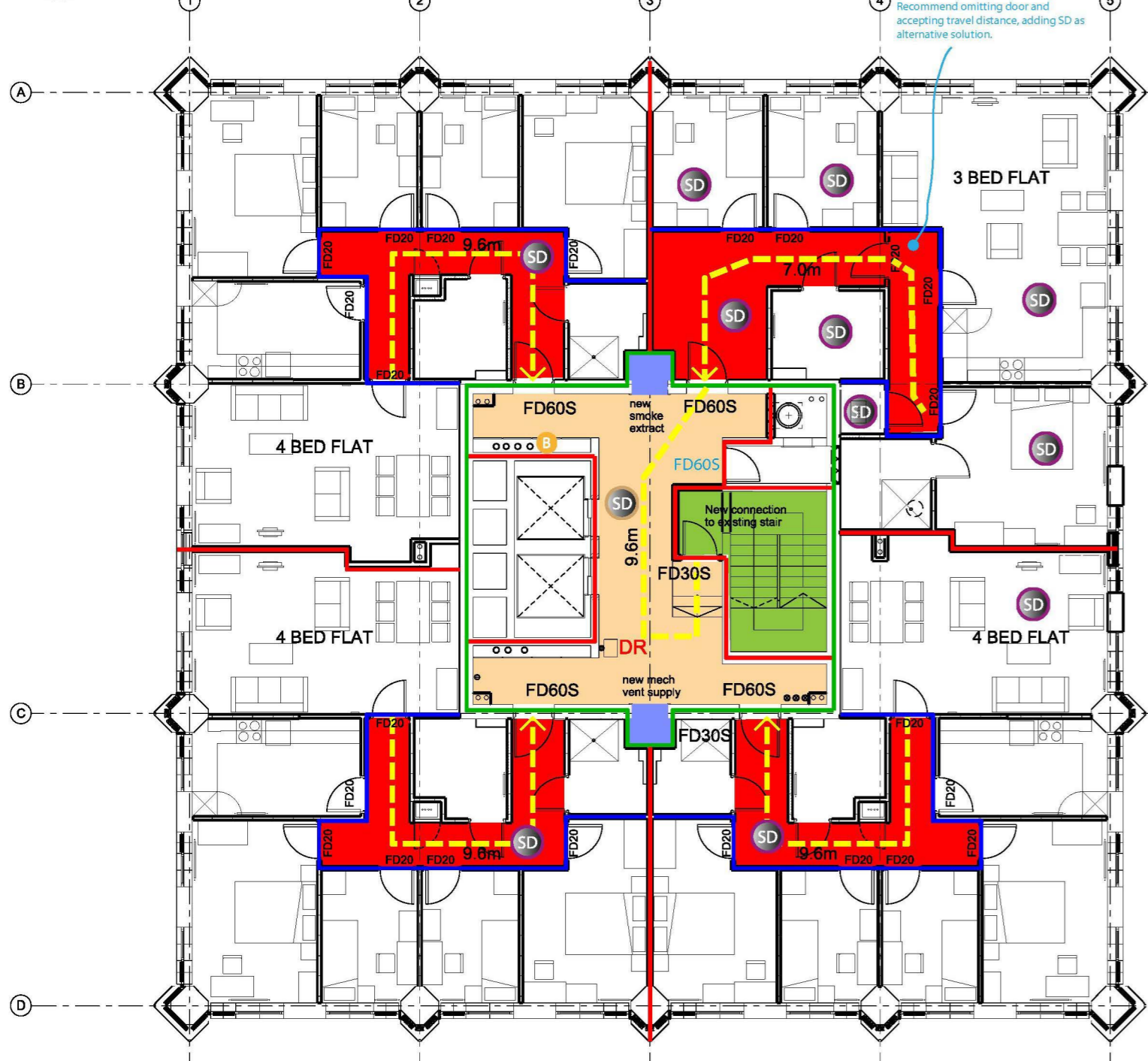
This is a room. Venting the room would not provide the same level of protection as venting a lobby thereto. In this case an unvented lobby separation to the residential escape is considered appropriate.



Route of powered vent duct, is not shown carried down to serve lobby on floor below - mezzanine. No access should be provided to stairway enclosure (green area)

Route of 0.4m² duct to 'lobby'? Duct should be enclosed with fire resisting construction to external air.

1 MEZZANINE
1:100



A Office Stair
1:100

Protected Stairway

Fire resisting enclosure with FD30S doors
Doors on escape routes provided with simple fastenings - without the use of a key

Common Lobbies

Fire resisting enclosure with FD60S doors
Existing powered ventilation system - Powered inlet and outlet.
Existing extract rate 7 m³/s
Existing supply 7 m³/s

No details of existing extract / supply rates are given therefore no consideration could be given of adverse affect on existing system. If system designers wish to redesign the system without consideration of adverse affect, justification for the proposed extract rate needs to be submitted, including performance modelling.

Doors on escape routes provided with simple fastenings - without the use of a key

Common Lobbies

Fire resisting enclosure with FD60S doors
Natural vent 0.4m².

Doors on escape routes provided with simple fastenings - without the use of a key

Inner Hall

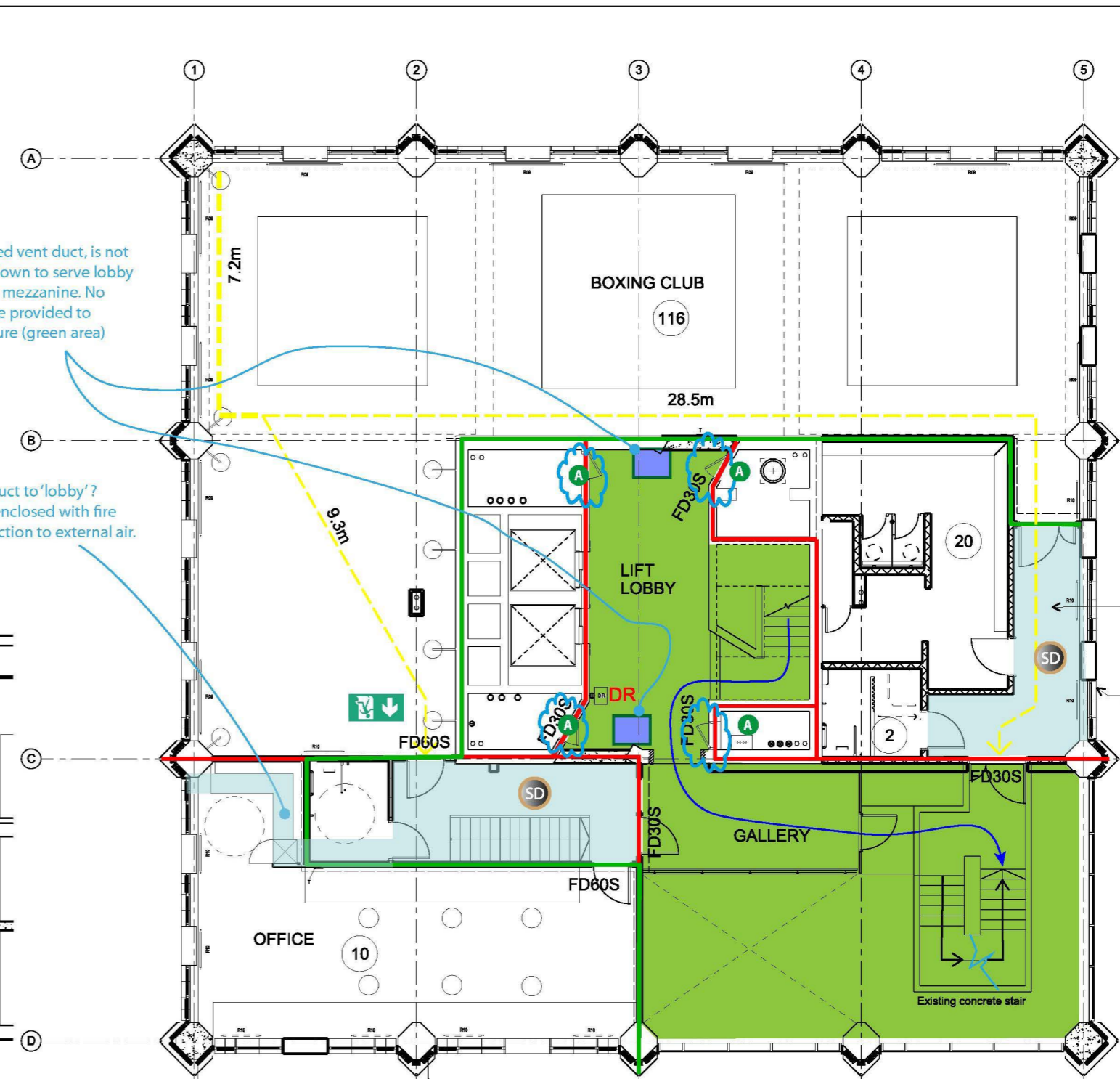
Fire resisting enclosure with FD20 doors
SD provided for flat warning (not interlinked between flats)
System complying with BS 5839-6 Grade D Category LD3

Risers accessed from Stairway

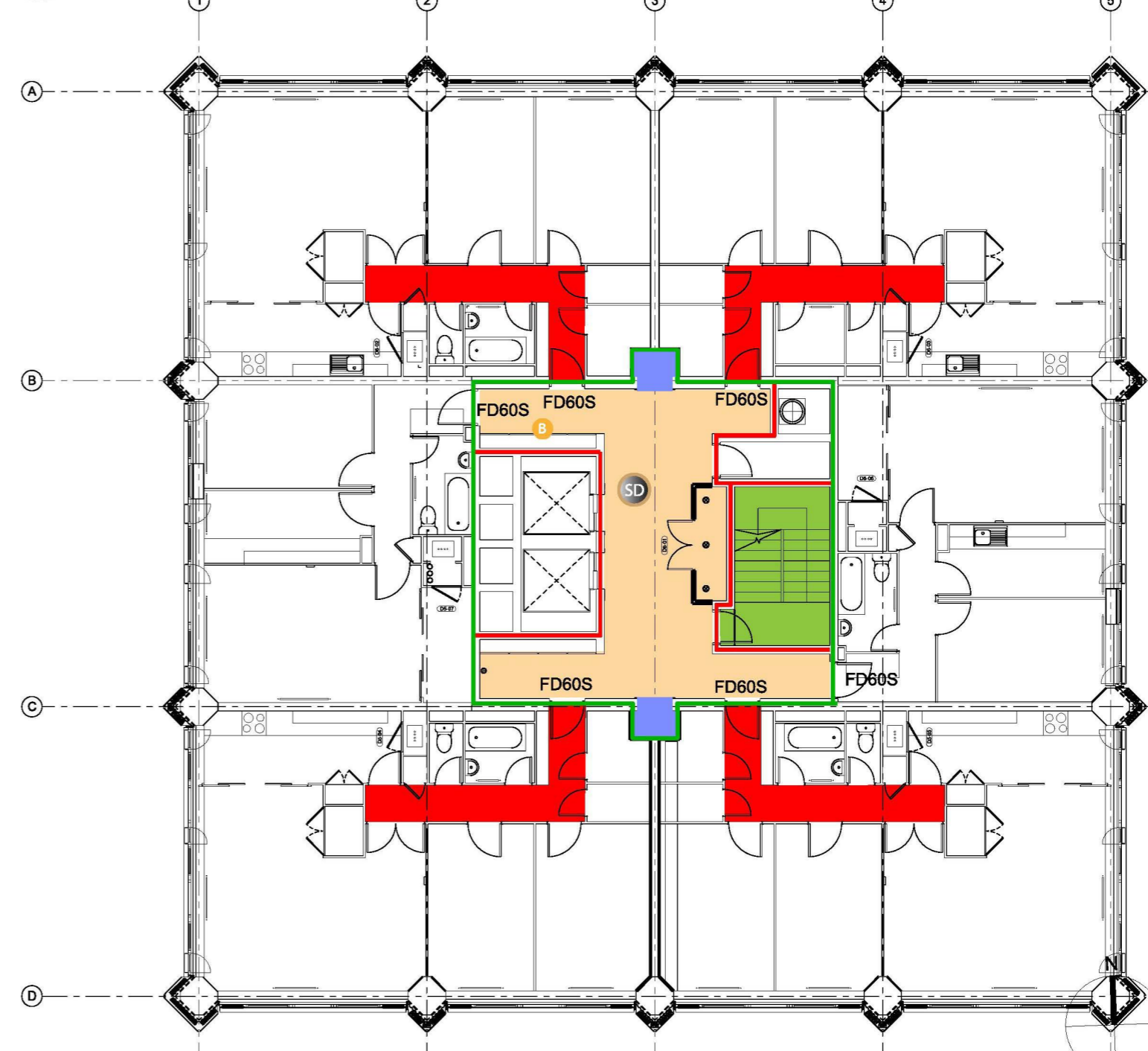
Access should not be provided to services from the single stairway. (Hot and cold water/dry riser services are acceptable in metal pipes with suitable fire stopping). (Note in the existing building these risers were in the lobby). Can these access panels be sealed at this level?

Risers accessed from common Lobbies
Fire resistance should be achieved from the riser side of the enclosure. Access to services from the lobby should be via an FD30S with 'Fire Door Keep Locked Shut' signage.

3 WALKWAY +1 (new resi)
1:100



2 WALKWAY LEVEL
1:100



4 TYPICAL RESIDENTIAL FLOOR
1:100

- NOTE**
- THIS DRAWING IS COPYRIGHT STUDIO E LLP
 - THE CONTRACTOR MUST NOT SCALE FROM THE DRAWING ALL DIMENSIONS TO BE TAKEN FROM DIMENSION STRINGS
 - WHERE ANY DISCREPANCIES ARE FOUND BETWEEN DIMENSIONS THESE MUST BE BROUGHT TO THE ATTENTION OF THE ARCHITECTS FOR RESOLUTION
 - WHERE DISCREPANCIES EXIST BETWEEN REFERENCE OR ASSEMBLY DRAWINGS & DETAIL DRAWINGS, THE LATTER TAKE PREFERENCE

- KEY**
- 30 minute rated construction line
 - 60 minute rated construction line
 - 120 minute rated construction line
 - Final Exit
 - Escape route in one direction
 - Escape route in multiple directions
 - 1hr Fire Curtain
 - DR Dry Riser
 - 32 Room Occupancy
 - AOV vented lobby
 - Mech vented lobby (re-used ducts)

RBKC MOE - P1
Comments in blue by RBKC Building control



EMPLOYER'S REQUIREMENTS

| | | |
|--|----------|---------|
| STUDIO E LLP | | |
| Palace Wharf, Rainville Road, London, W8 5RU | | |
| Tel: [REDACTED] Fax: [REDACTED] | | |
| GRENELL TOWER REGENERATION PROJECT | | |
| PROJECT | | |
| FIRE ACCESS PLAN | | |
| DRAWING | | |
| 1:100@A1 | 24/10/13 | |
| SCALE | DATE | |
| 1279 (08) 100 00 | | BS |
| DWG. NO. | REVISION | CHECKED |