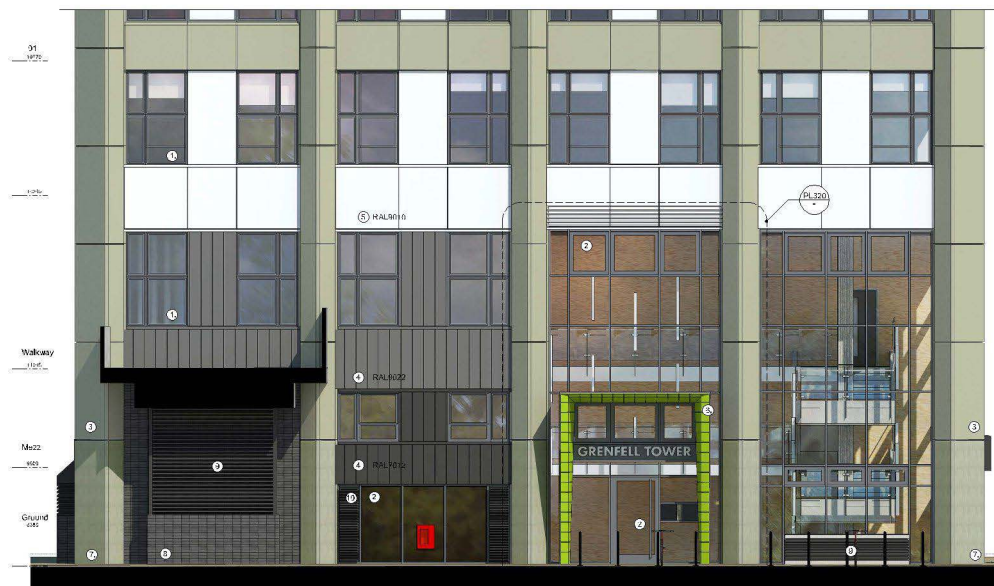


1. ALUMINUM TILT & TURN WINDOW/DOORS
2. ALUMINUM CURTAIN WALL, OPENING LIGHTS & GLAZED DOORS
3. ALUMINUM COMPOSITE MATERIAL RAINSCREEN PANEL
4. ALUMINUM INTERIOR PANEL RAINSCREEN
5. ALUMINUM CASSETTE RAINSCREEN
6. ALUMINUM CASSETTE - RAL 9018 "MAY GREEN"
7. GLASS-REINFORCED CONCRETE (LOW LEVEL)
8. STAFFORDSHIRE SLATE BLUE SMOOTH BREAK, STALK BOUND
9. ALUMINUM VENTILATION LOUVER/S
10. ALUMINUM LOUVRES AS PART OF OPENING LIGHTS
11. STEEL DOORS, SLIC
12. ROLLER SHUTTER, PPC
13. EXISTING CONCRETE WALL TO ROOF PLANT ROOM

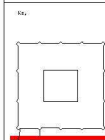


KEY ELEVATION (1:200)

SOUTH ELEVATION



1. THE CONTRACT IS CONSIDERED  
SIGNED.
2. THE CONTRACT MUST BE  
SIGNED BY BOTH THE  
COMPANY AND EMPLOYEES  
IN THE EMPLOYMENT  
OF THE COMPANY.
3. THE CONTRACT MUST BE  
SIGNED BY THE  
COMPANY AND EMPLOYEES  
IN THE EMPLOYMENT  
OF THE COMPANY.
4. THE CONTRACT MUST BE  
SIGNED BY THE  
COMPANY AND EMPLOYEES  
IN THE EMPLOYMENT  
OF THE COMPANY.



		Culture abroad
--	--	----------------



## PLANNING

STUDIO E ARCHITECTS LTD.

200 Under 30 issue. "EPL's Editor David  
Crisafulli is 29."

GRENfell TOWER

PROPOSED

SOUTH ELEVATION

1:50.6841 24.93214

DATE	TIME

12/16 PL 314	0
2.00 Hrs	0000
	0000