

Gas Safe Quality Assurance

Project Details

Work Type	Date	Supervisor	Team Leader	Area
MOBs	20-3-2017	Littlebury, Nathan ()	Kilmartin, Eddie ()	Lon-MOBs
Project Number	Property	Street	Town	Submitted By
170186	142	Grenfell Tower	W11	Radley, Andrew
Permit Number	AE	CP		

GPS

51.514° -0.215415°



20-03-2017 14:03

Save Clear Exit

Inspection Results Gas Safe Quality Assurance

SHE Equipment	Yes	No	NA	Observations	Actions
1.1 Gascoseeker			✓		
1.2 Continuity Bonds			✓		
1.3 Electrical tools			✓		
1.4 Lifting equipment/Ladders			✓		
Availability of Documentation	Yes	No	NA	Observations	Actions
2.1.1 ID card			✓		
2.1.2 Gas Safe licence card			✓		
2.1.3 Other competency cards			✓		
2.2 RAMS			✓		
2.3 Pre-task briefing			✓		
2.4 Supporting manuals			✓		
Use of PPE	Yes	No	NA	Observations	Actions
3.1 PPE			✓		
General Site Safety	Yes	No	NA	Observations	Actions
4.1 Voltstick			✓		
4.2 Asbestos			✓		
4.3 Fire extinguishers			✓		
4.4 Cable locator			✓		
4.5 Working area			✓		
4.6 Making Good / remedial work			✓		
Signing, Lighting & Guarding	Yes	No	NA	Observations	Actions
5.1 Signing, Lighting & Guarding			✓		

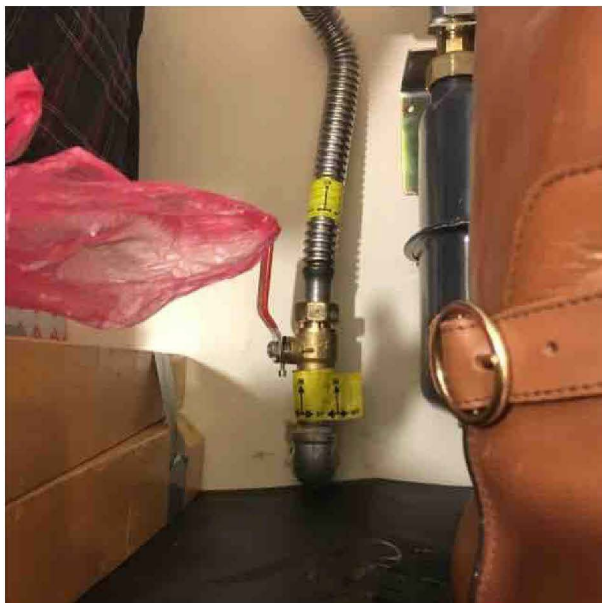
Plant & Equipment	Yes	No	NA	Observations	Actions
6.1 All tools assessed for HAVs?			✓		
6.2 All tools assessed for Noise?			✓		
6.3 General hand tools			✓		
High Risk works	Yes	No	NA	Observations	Actions
7.2 High risk activities			✓		
Meter Installation	Yes	No	NA	Observations	Actions
8.1 Emergency Control Valve	✓			Ecv	
8.2 Meter location	✓			In cupboard	
8.3 Meter box / bracket	✓			Bracket	
8.4 Meter installation	✓			Meter install	
8.5 Shear bolts	✓				
8.6 Meter regulator	✓				
8.7 Gas meter	✓			Meter	
8.8 Correct labelling	✓			Yes	
8.9 Equipotential bonding	✓			Bonding	
8.10 Is installation EB125 compliant?	✓			Yes	
8.11 X bonding - CSE action	✓			Booked with joe Eden	
Pipework	Yes	No	NA	Observations	Actions
9.1 Pipework installed correctly?	✓				
9.2 Straight and level?	✓			Straight	
9.3 Clipped correctly?	✓				
9.4 Sleeved correctly?	✓				
9.5 Sleeve sealed correctly?	✓			Sleeving	
9.6 AECV required?			✓		
9.7 Pipework labelled?	✓				
Tightness Testing	Yes	No	NA	Observations	Actions
10.1 Manometer fit for purpose?			✓		
10.2.1 Tightness test (WIP)			✓		
10.2.2 Tightness test (PC)			✓		
10.3 Purging			✓		
10.4 Standing Pressure			✓		
10.5 Working Pressure			✓		
Appliance inspection	Yes	No	NA	Observations	Actions
11.1 Visual inspection	✓				
11.2 Flueing	✓				
11.3 Ventilation	✓				
11.4 Location	✓				
11.5 Stable & Secure	✓				
11.6 Flame picture	✓			Flame	
11.7 Signs of distress			✓		
11.8 Are safety devices operating OK?	✓				
11.9 Unsafe situations			✓		
11.9.1 Not ID?			✓		
11.9.2 Not AR?			✓		
11.9.3 Not NCS?			✓		
11.10 Auditor actions			✓		
11.12 Labelling			✓		
11.11 Safety Notice			✓		
Post Work Data capture	Yes	No	NA	Observations	Actions

12.1 Project No.			✓		
12.2 Address			✓		
12.3 Meter details			✓		
12.4 Regulator details			✓		
12.5 Appliance details			✓		
12.6 Commercial details			✓		
12.7 Pictures			✓		
Customer Experience	Yes	No	NA	Observations	Actions
13.1 Customer happy	✓				
13.2 No further action?	✓				
13.3 Can you explain what KICK is :			✓		
13.4 Is there evidence of KICK being used Effectively			✓		
Working at Height	Yes	No	NA	Observations	Actions
14.1 Is working at height required?			✓		
14.2 Correct solution			✓		
14.3 RAMS			✓		
14.4 Competency			✓		
14.5 Equipment satisfactory?			✓		
CDM & Design Assurance	Yes	No	NA	Observations	Actions
15.1 Welfare and First Aid equipment			✓		
15.2 Project design			✓		
15.3 Construction Phase Plan			✓		
15.4 Design Risk			✓		
15.5 Utility plans			✓		
15.6 High risk utilities			✓		
15.7 F10			✓		
15.8 Emergency contacts			✓		
Management of Gas Escapes	Yes	No	NA	Observations	Actions
16.1 Gas Escapes			✓		
Lifting Operations	Yes	No	NA	Observations	Actions
17.1 Lifting operation			✓		
17.2 Lifting plan			✓		
17.3 Slinger/Signaller			✓		
17.4 Lifting equipment certs			✓		
17.5 Lifting equipment checks			✓		
17.6 Daily RAs			✓		
Environmental	Yes	No	NA	Observations	Actions
18.1 Environmental issues			✓		
18.2 Water discharge			✓		
18.3 Env Nuisances			✓		
18.4 Working adj trees			✓		

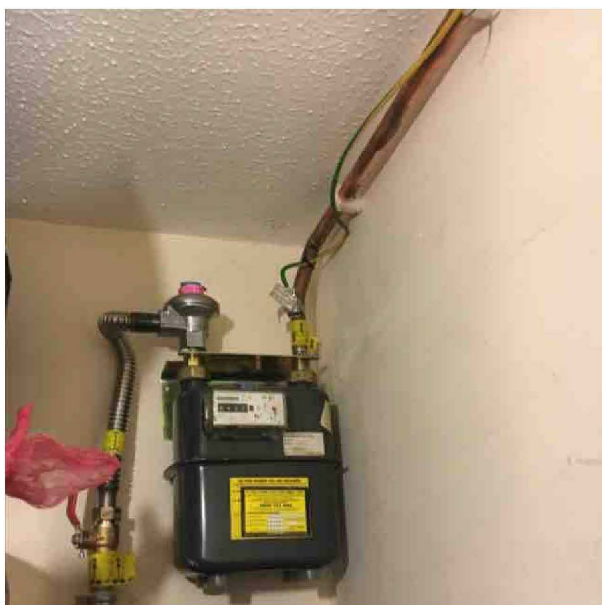
Additional Pictures

Date 20/3/2017 13:52

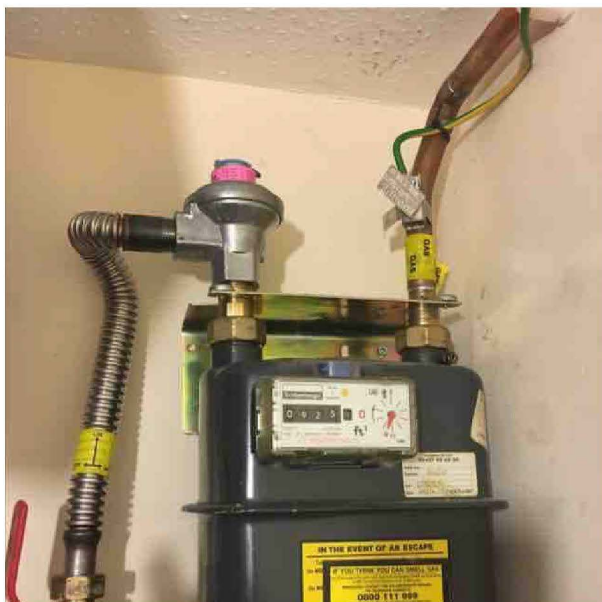
Status Site Inspection



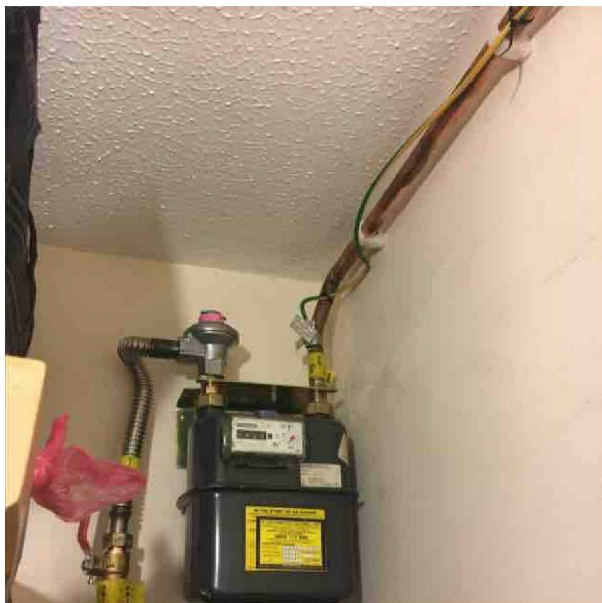
Date 20/3/2017 13:53
Status Site Inspection



Date 20/3/2017 13:53
Status Site Inspection



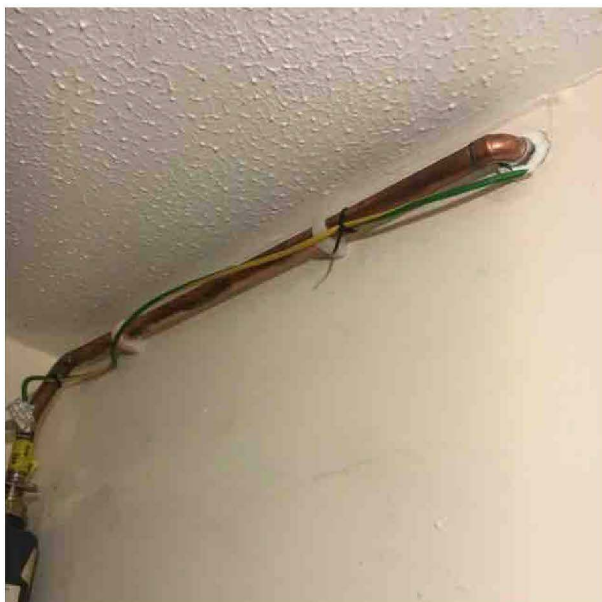
Date 20/3/2017 13:54
Status Site Inspection



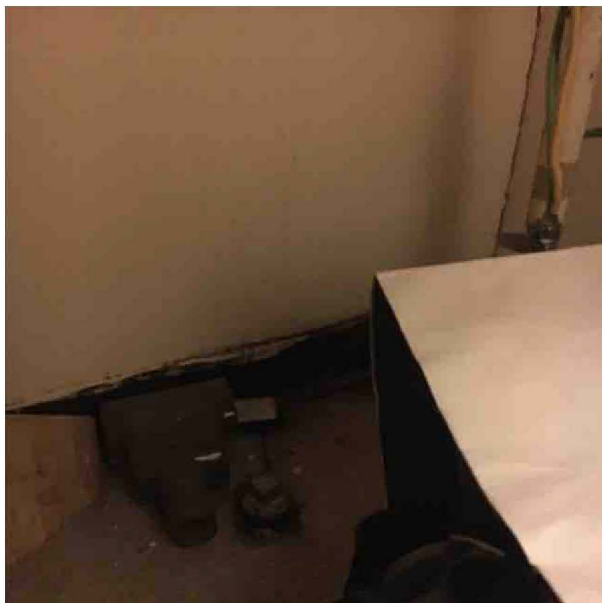
Date 20/3/2017 13:55
Status Site Inspection



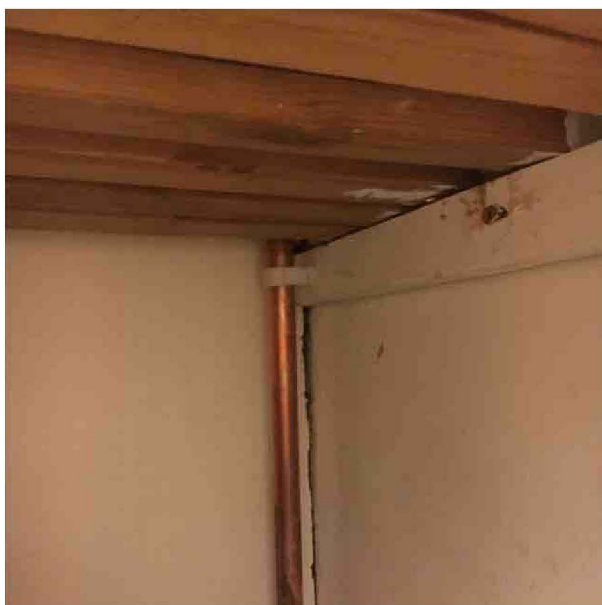
Date 20/3/2017 13:56
Status Site Inspection



Date 20/3/2017 13:57
Status Site Inspection



Date 20/3/2017 13:58
Status Site Inspection



Date 20/3/2017 13:59
Status Site Inspection



Date 20/3/2017 14:01
Status Site Inspection

