

T300 Abandoned Call (Landline)

To Consider :-

Homepage

Mobile

Child Caller on 999

Landline

TecSOS Phones

RIPA Request

EISEC Information

Silent Solution

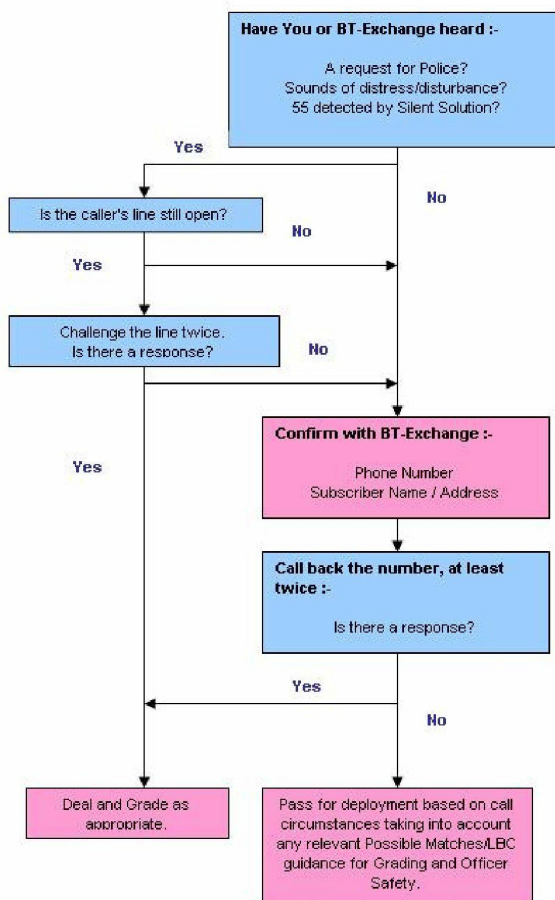
Emergency Roamers

Type Talk/Text Relay and ESMS

Telematics or GPS Calls

VOIP Calls

MetCC Operators should only phone back Landlines if the Attendance Location of the Caller is not known or there are no known risks identified (i.e. no relevant LBCs or Possible Matches).



Template



C. S. Andrew