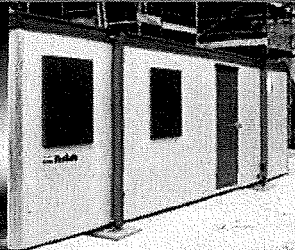
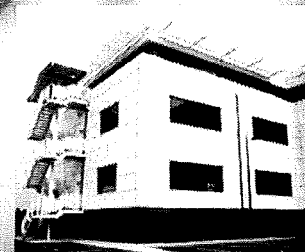


Solfre[®] 2

Two part performance
for extra bond strength



Strength • Reliability • Innovation



Chemique[®]

Solfre²

First developed in 1989, Solfre2 is the result of Chemique's policy to dedicate considerable resources to research and development with the aim to offer a unique alternative to epoxies, one part polyurethanes, solvated neoprene, methacrylates and hotmelts.

A revolutionary solvent free two part polyurethane adhesive

Solfre2 has a number of benefits over more conventional adhesives:

- **Improved Quality of Bond**
Being solvent free, the Solfre2 system overcomes the problem of trapped solvent or moisture pockets and consequent delamination.
- **Lower Coating Weights**
Due to the precise chemical make up of this adhesive system, reduced coat weights over conventional polyurethane adhesives have been proven to achieve superior bond performance.
- **Stability in Cure Times**
Being a two component adhesive system, the chemistry can be accurately predetermined to give reduced press times.
- **Increased Productivity**
Solfre2 can be tailored to each customer's requirements. The cure cycle can be varied from as little as a few minutes to as much as a few hours depending on the specifics of the customer's bonding process.


Applications

Solfre2 Panel Adhesives are suitable for bonding a wide range of panel types including:

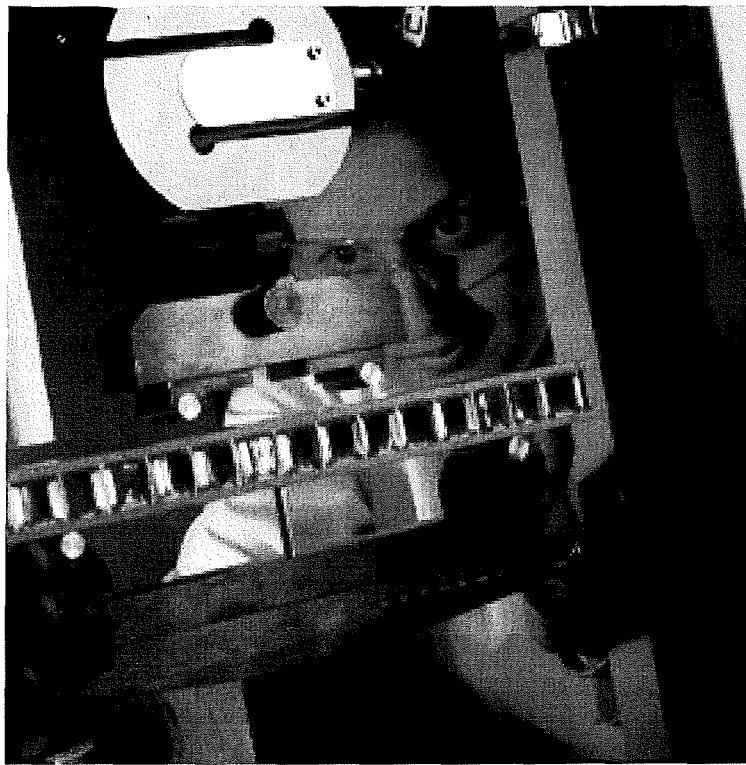
- Architectural Panels
- Insulation Panels
- Building Panels- for use in clean rooms, portable buildings and cold storage.
- Caravan Panels

Typical substrates that can be bonded with Solfre2 include various different types of

- Foam
- Timber
- Metals
- Plastics



Chemique



Products

The Solfre2 range of panel adhesives can be grouped by the following methods of application:

Roller

- Minimal adhesive waste and clean operation
- Both sides of the core substrate can be coated at the same time
- Does not require ventilation
- Ideally suited to an automated process.

Bead

- Utilises low cost adhesive
- Offers a degree of gap filling in the panel construction
- Does not require ventilation
- Can be applied manually or by an automated system.

Spray

- Extremely versatile in type, size and number of panels constructed
- Very low adhesive coating weights
- Can laminate panels of simple or complex construction
- Allows use of new Fast Tack grades of Solfre2
- A wide range of spray application equipment is available from small hand spray guns to large automated lines.

Solfre2 Product Accreditations

Solfre2 has been used in various different panels that have passed the following accreditations:

ACCREDITATION	DESCRIPTION
ASTM E662-2003	Standard test method for specific optical density of smoke generated by solid materials
ASTM E162-02A	Standard test method for surface flammability of materials using a radiant heat energy source
Bombardier SMP 800-C	Toxic gas generation of aluminium honeycomb composite
BS476 Part 6	Method for test for fire propagation for products
BS476 Part 7	Method for classification of the surface spread of flame of products
BS6853	Code of practice for fire regulations in the design and construction of passenger carrying trains- Methods for smoke density
E1042	Fire safety of materials used in the London Underground

Each group of adhesives has the flexibility of various different open times ensuring Solfre2 is suitable for a wide range of manufacturing methods.

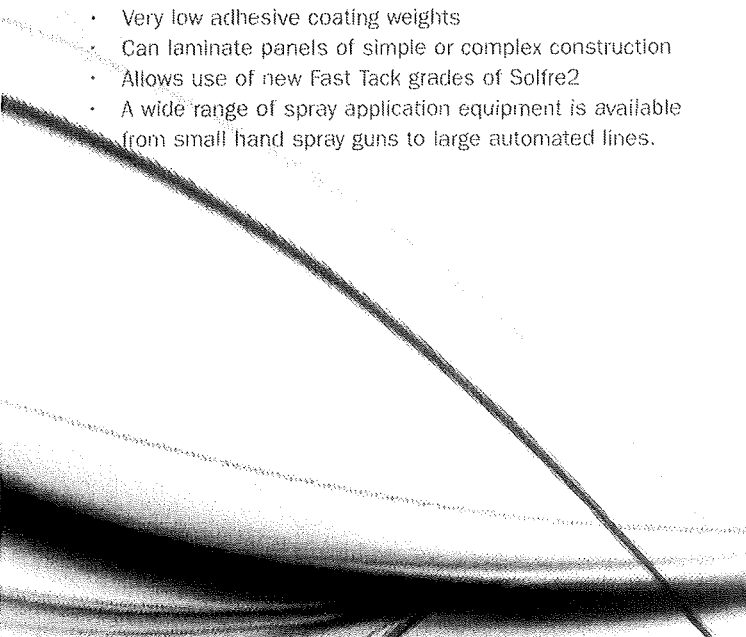
Solfre2 Fast Tack

Chemique's continued investment in the design of cutting edge adhesives has enabled the company to develop the Solfre2 range of adhesives to include Solfre2 Fast Tack. With this group of adhesives, a heated conveyor is incorporated into the production line to speed up the cure time of the adhesive. This then enables the customer to considerably increase production rates without compromising on the quality of the bonded panels.

Solfre2 Panel Adhesive Development

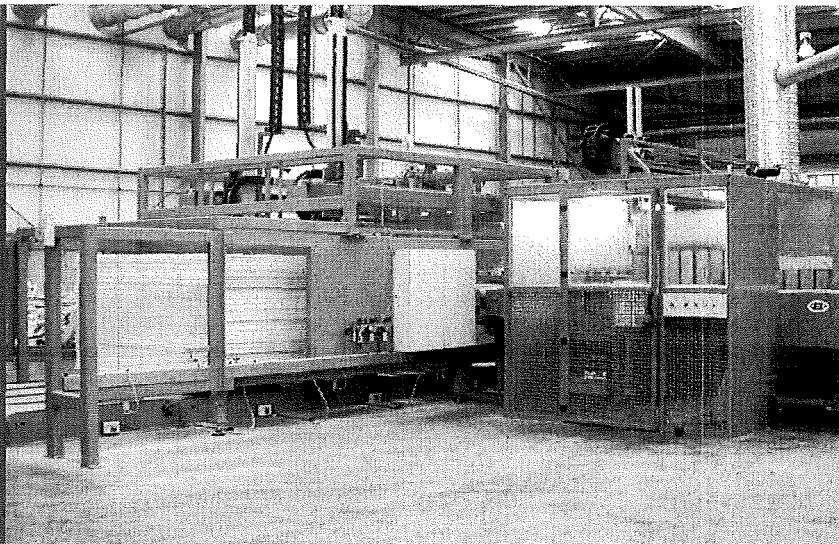
Chemique is dedicated to the ongoing development of innovative adhesive systems and application equipment. Our state-of-the-art laboratory contains spray booths, presses and testing equipment to enable Chemique's experienced chemists to recreate a customer's production line. This then helps us to recommend the correct adhesive and application method for the customer's specific needs.

Central to the development of new adhesives is our state-of-the-art tensometer. Up to 20 different tests can be done to measure the quality of the panels helping to develop more superior adhesives, remain at the forefront of adhesive technology and ensure customer satisfaction.



The Total Package

Our commitment to providing outstanding customer service means that all of our customers receive our unique service and support package.



The Chemique Total Package consists of the following:

Tailor-made Solutions

Chemique works closely with customers to provide formulations that suit their particular needs.

Rigorous Quality Control

The company's manufacturing and service procedures comply with the stringent requirements of ISO 9001:2000.

Full Engineering and Technical Support

Chemique's fully trained staff offer on-going technical support as well as:

- Advice on improving the production process
- Pre-delivery adhesive and equipment testing
- Installation of new equipment
- Servicing of pumps, spray guns and other equipment
- Engineering call outs
- Service contracts

Demonstrations and Samples

We offer demonstrations and samples of the adhesives so that customers can be sure that the products meet all of their requirements before they order.

Comprehensive Training

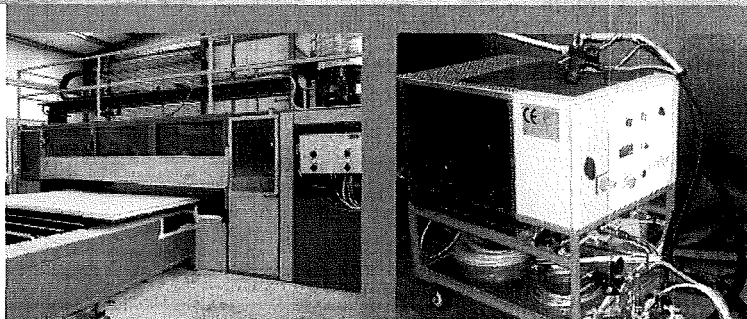
Full training is provided on the products and application equipment ensuring a smooth and successful implementation of new technology.

Full Range of Accessories

A full range of cleaners, sealants, primers and coatings is available along with a full stock of spare parts and filters for all standard application equipment.

After Sales Service

We provide full after sales support to ensure that all products and equipment are working to specification.



Application Equipment

To complement our Solfre2 range of adhesives, Chemique offers a variety of application methods from hand rollers to fully automated production lines, developed to suit customers' individual needs.

Manual Application

A range of manual application equipment is available for low to medium volume Solfre2 users. This range of equipment gives many benefits including:

- Minimal wastage
- Low maintenance
- Low cost
- Easy to use
- Mobile and flexible

Semi-Automatic Application

Chemique also offers a range of semi-automatic sprayable, beadable and roller coating systems. These systems are suitable for high volume users and give the following benefits:

- Measurable usage
- Minimal overspray
- Consistent and even application of adhesive
- Adjustable speed and coating weights

Chemique

Empire Close, Aldridge, West Midlands WS9 6UR
Tel: +44 (0) 1922 459321 Fax: +44 (0) 1922 745795
Email: enquiries@chemique.co.uk
Website: www.chemique.co.uk

Chemique Adhesives Inc

Suite 540, 3990 Flowers Road, Perimeter Place Business Park,
Atlanta, GA 30360
Tel: +1 770 451 2904 Fax: +1 770 234 5790
Email: Chemique@bellsouth.net
Website: www.chemiqueadhesives.com